

Dallas County Needs Assessment 2008



The Greater Dallas Council of Alcohol and Drug Abuse

Mission: To improve our communities' health, safety and productivity by reducing the incidence and impact of alcohol and drug abuse.

Table of Contents

Table of Contents	2
Introduction.....	3
Juvenile Alcohol Use	4
Adult Alcohol Use	7
Drinking and Driving.....	9
Alcohol and Drug Related Motor Vehicle Fatalities	11
Juvenile Drug Use.....	12
Adult Tobacco Use	18
Juvenile Tobacco Use	20
Arrests for Alcohol and Drugs.....	26
Youth Treatment Data.....	28
Adult Treatment Data	32
Violent Crime.....	36
Family Violence.....	39
Teen Pregnancy.....	41
Sexually Transmitted Diseases	43
HIV/AIDS	44
Mental Health.....	46
High School Drop Out Rates	49

Introduction

This Dallas County Community Assessment highlights archival community data about alcohol and drug use and the associated consequences. Data was collected from established surveys or county and state reporting systems. Data was primarily chosen based on its relevancy to program planning. Consistency, accuracy, and accessibility were also taken into consideration when choosing data to present here.

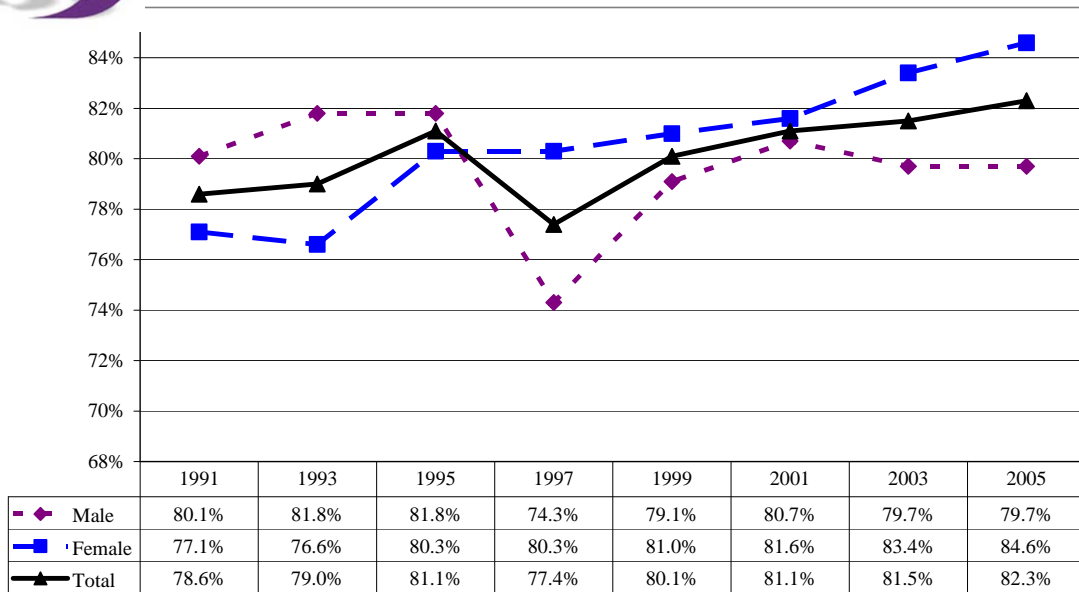
For further information or additional copies of this publication, please contact The Greater Dallas Council on Alcohol and Drug Abuse at (214) 522-8600 or visit our website at www.gdcada.org.

Juvenile Alcohol Use

The data in this section comes from the National Youth Risk Behavior Survey (YRBS). The YRBS monitors health risk behaviors that contribute to the leading causes of death, disability, and social problems among youth and adults in the United States. The national YRBS is conducted every two years during the spring semester and provides data representative of 9th through 12th grade students in public and private schools throughout Dallas County.



Percentage of Dallas County students who had at least one drink of alcohol on one or more days during their life.

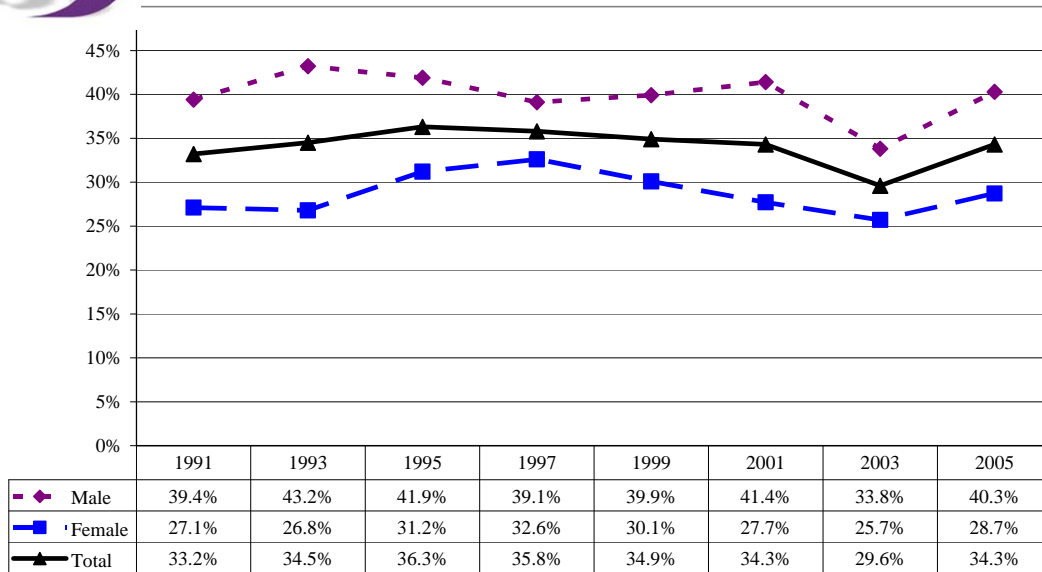


Note: Data is also available on the YRBS website by grade and ethnicity.

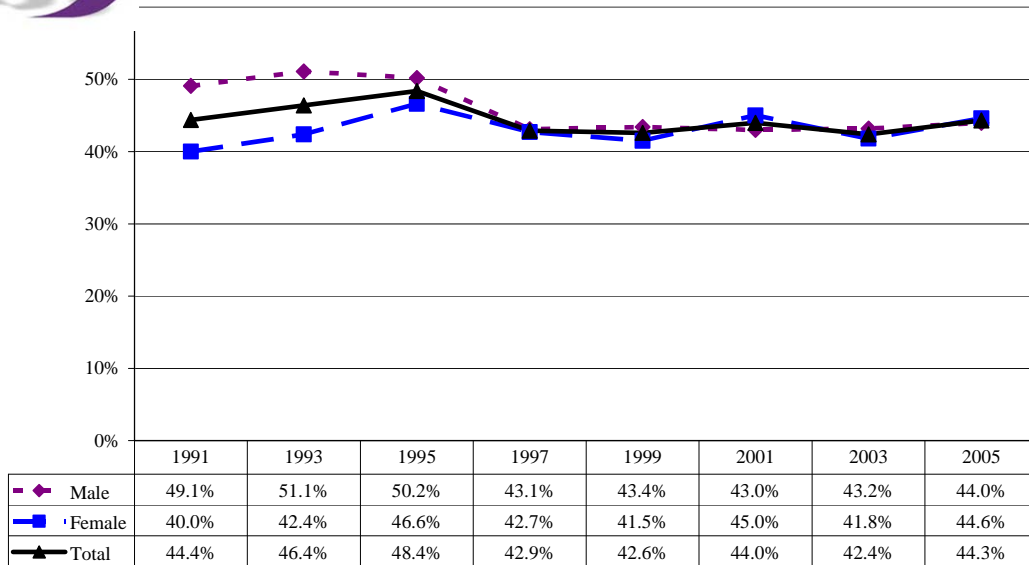
Source: Youth Risk Behavior Survey (YRBS). Retrieved June 6, 2008 from <http://apps.nccd.cdc.gov/yrbss/SelHealthTopic.asp?loc=DA>



Percentage of Dallas County students who had their first drink of alcohol other than a few sips before age 13 years.



Percentage of Dallas County students who had at least one drink of alcohol on one or more of the past 30 days.

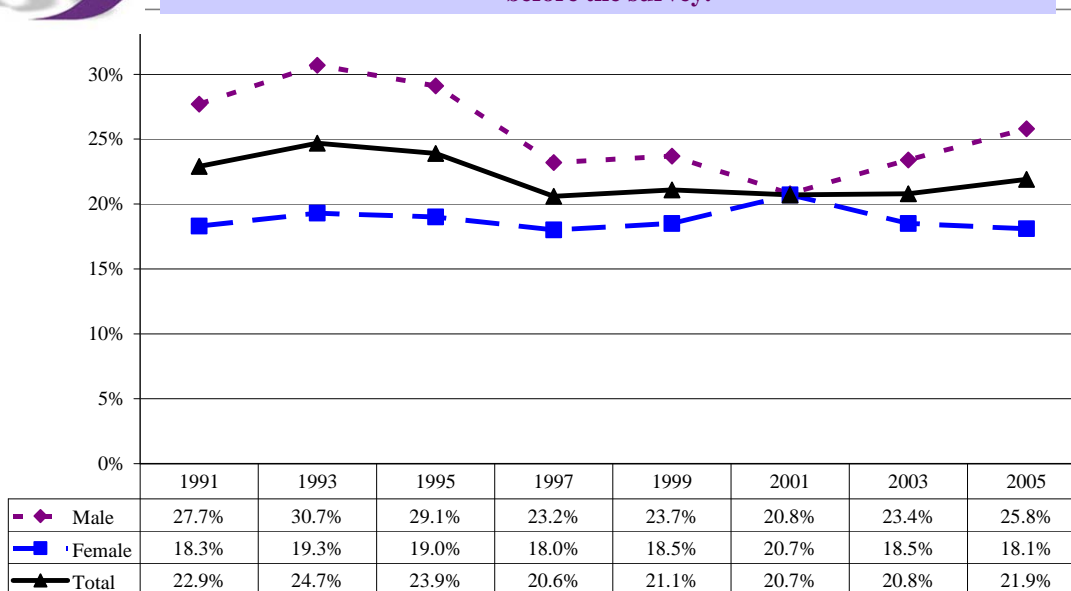


Note: Data is also available on the YRBS website by grade and ethnicity.

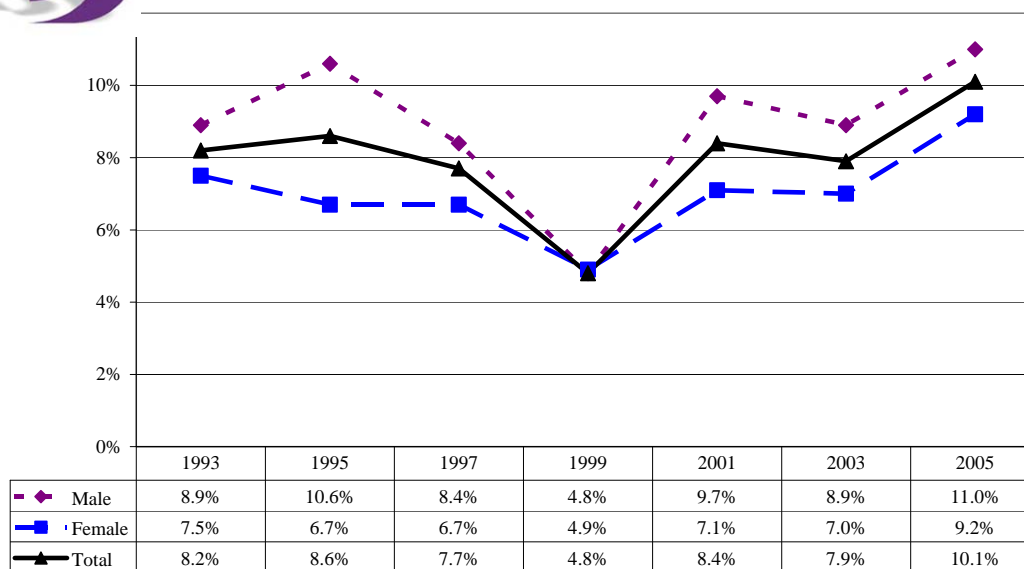
Source: Youth Risk Behavior Survey (YRBS). Retrieved June 6, 2008 from <http://apps.nccd.cdc.gov/yrbss/SelHealthTopic.asp?loc=DA>



Percentage of Dallas County students who had five or more drinks of alcohol in a row, that is, within a couple of hours, on at least 1 day during the 30 days before the survey.



Percentage of Dallas County students who had at least one drink of alcohol on school property on one or more of the past 30 days.



Note: Data is also available on the YRBS website by grade and ethnicity.

Source: Youth Risk Behavior Survey (YRBS). Retrieved June 6, 2008 from <http://apps.nccd.cdc.gov/yrbss/SelHealthTopic.asp?loc=DA>

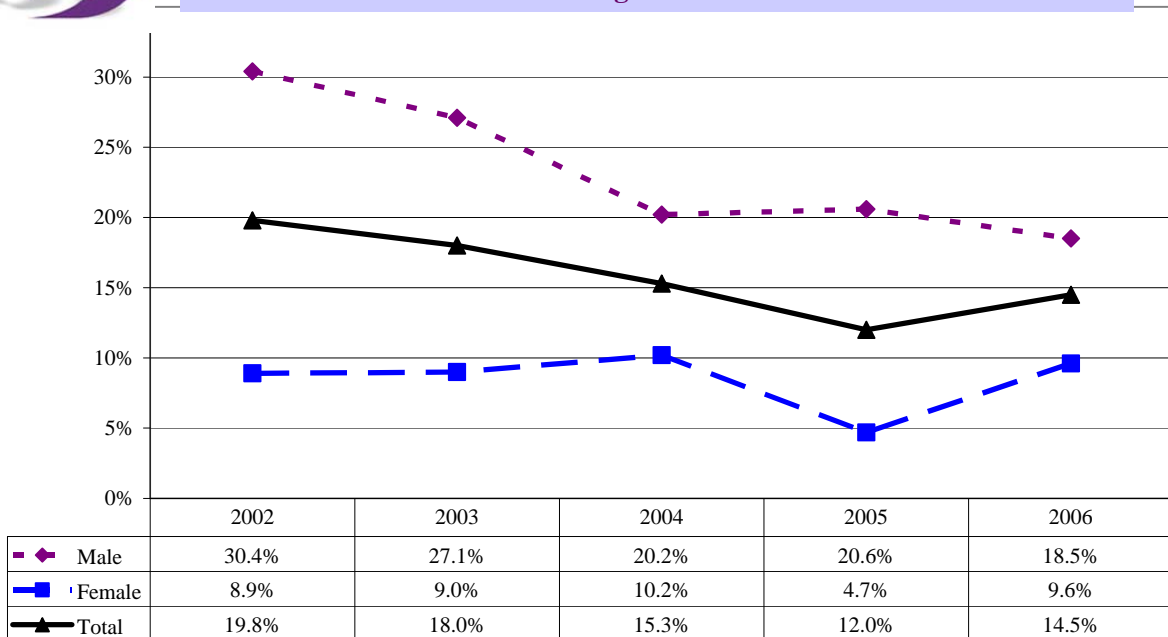
Adult Alcohol Use

The data in this section comes from the Behavioral Risk Factor Surveillance System (BRFSS). Conducted by the Centers for Disease Control and Prevention (CDC), the BFRSS collects data on health risk behaviors, preventive health practices, and health care access primarily related to chronic disease and injury. The BFRSS telephone survey is collected in all 50 states, the District of Columbia, Puerto Rico, the U.S. Virgin Islands, and Guam and is the largest telephone health survey in the world. Texas has stratified their samples to allow them to estimate prevalence for regions within the state.

The data in this section includes Dallas, Colin, Rockwall, Kaufman, Hunt, Elis, and Denton Counties.



Percentage of adults who report having (five or more drinks for men or four or more drinks for women) on one or more occasions in the past 30 days, by gender

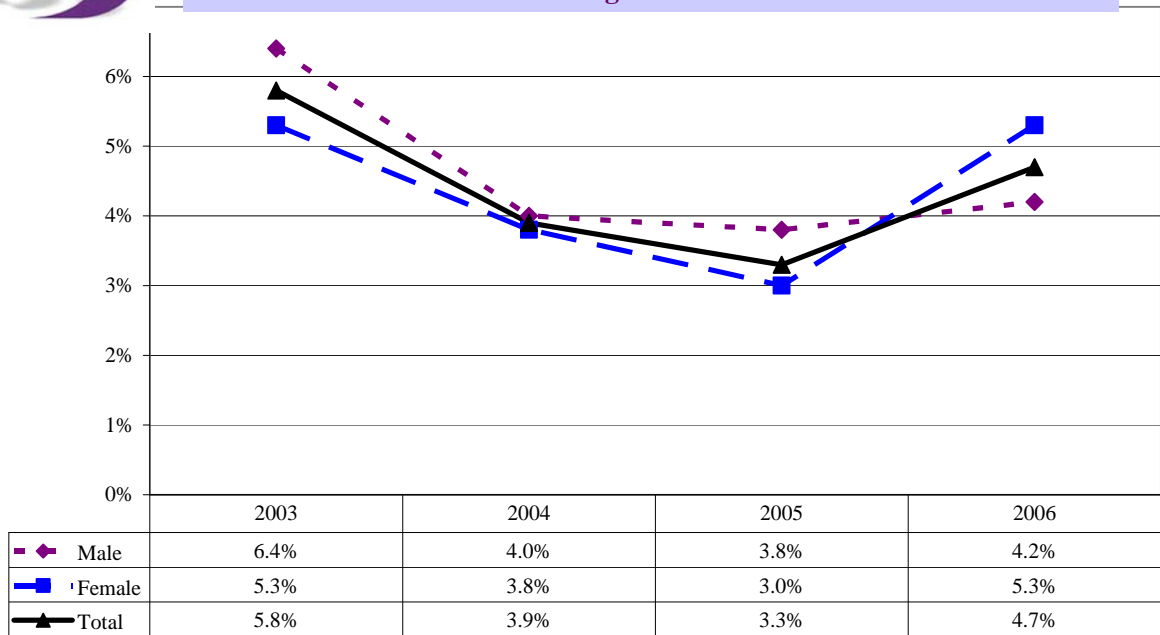


Note: Data is also available on the BFRSS website by ethnicity, education level, and income level.

Source: Behavioral Risk Factor Surveillance System (BRFSS). Retrieved June 6, 2008 from http://www.dshs.state.tx.us/chs/brfss/query/brfss_form.shtm



Percentage of adults who report having (greater than 2 drinks per day for a man or greater than 1 drink per day for a female) in the past 30 days, by gender.



Note: Data is also available on the BFRSS website by ethnicity, education level, and income level.

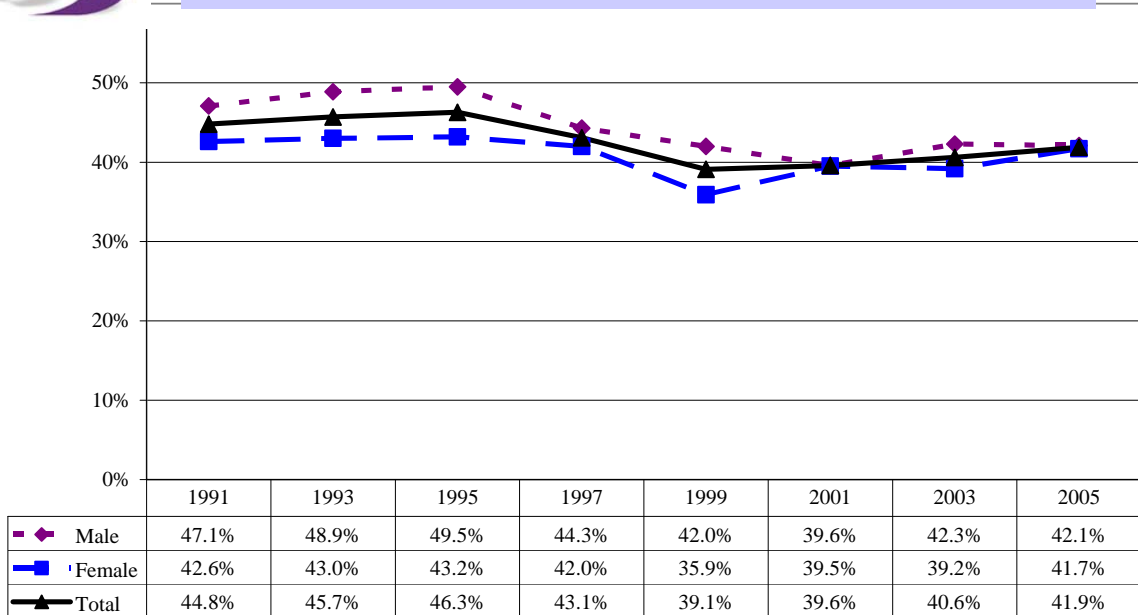
Source: Behavioral Risk Factor Surveillance System (BRFSS). Retrieved June 6, 2008 from http://www.dshs.state.tx.us/chs/brfss/query/brfss_form.shtm

Drinking and Driving

The data in this section comes from the National Youth Risk Behavior Survey (YRBS). The national YRBS monitors priority health risk behaviors that contribute to the leading causes of death, disability, and social problems among youth and adults in the United States. The national YRBS is conducted every two years during the spring semester and provides data representative of 9th through 12th grade students in public and private schools throughout Dallas County.



Percentage of Dallas County Students Who Rode in a Car or Other Vehicle Driven by Someone Who Had Been Drinking Alcohol One or More Times During the Past 30 Days.

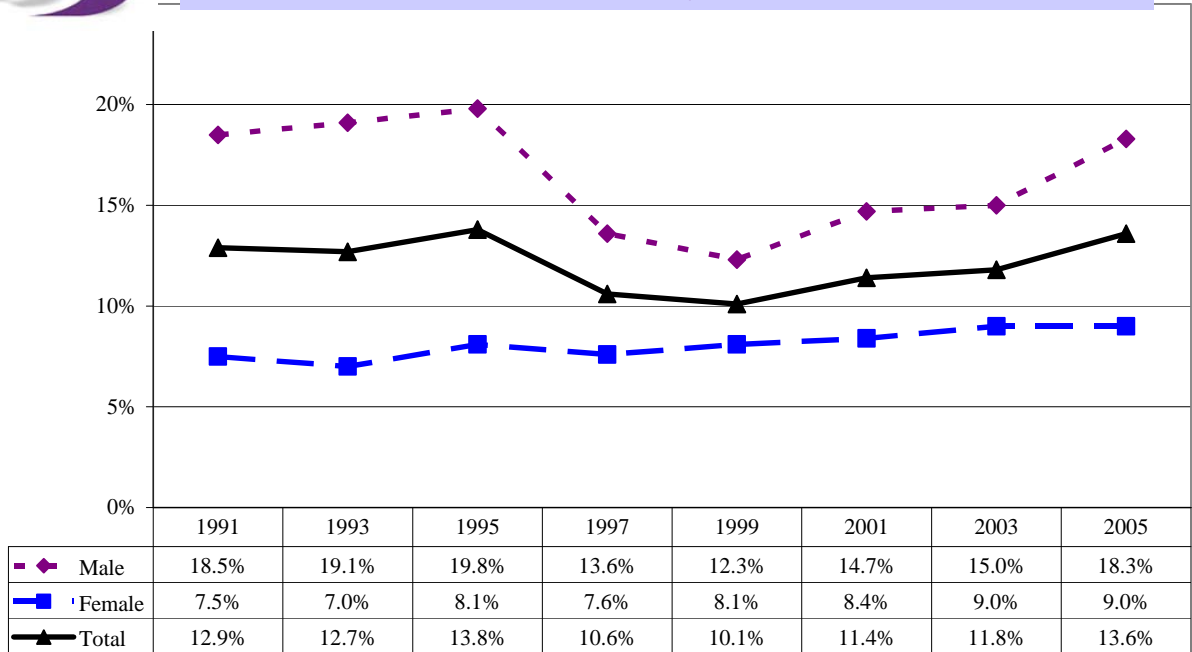


Note: Data is also available on the YRBS website by grade and ethnicity.

Source: Youth Risk Behavior Survey (YRBS). Retrieved June 6, 2008 from <http://apps.nccd.cdc.gov/yrbss/SelHealthTopic.asp?loc=DA>



Percentage of Dallas County Students Who Drove a Car or Other Vehicle When They Had Been Drinking Alcohol One or More Times During the Past 30 Days.



Note: Data is also available on the YRBS website by grade and ethnicity.

Source: Youth Risk Behavior Survey (YRBS). Retrieved June 6, 2008 from <http://apps.nccd.cdc.gov/yrbss/SelHealthTopic.asp?loc=DA>

Alcohol and Drug Related Motor Vehicle Fatalities

The data in this section comes from the National Highway Traffic Administration's Fatality Analysis Reporting System Encyclopedia (FARS). They define an "alcohol-involved crash as one that involves at least one driver, pedestrian or pedal-cyclist with a Blood Alcohol Concentration (BAC) of 0.01 g/dl or above". A fatality that occurs in such a crash "is defined as an alcohol-related fatality".

The data below was compiled using FARS with the following variables: Dallas County (code 113), alcohol test results, and number of fatal injuries.

Dallas County Motor Vehicular Fatalities by Alcohol Test Result, 2002-2006

Alcohol Test Result	2002	2003	2004	2005	2006
0.00% to 0.04% BAC	62	86	90	54	42
0.05% to 0.09% BAC	9	10	4	2	5
0.10% to 0.14% BAC	8	8	12	16	6
0.15% to 0.19% BAC	11	13	14	14	11
0.20% to 0.24% BAC	16	12	12	10	8
0.25% to 0.29% BAC	7	10	7	5	1
0.30% to 0.34% BAC	1	3	7	3	2
0.35% to 0.39% BAC	0	0	1	1	0
0.40% to 0.44% BAC	2	0	1	0	1
None Given	111	85	119	116	114
AC Test Performed, Results Unknown	20	12	6	11	6
Unknown	0	6	3	2	3
Blank	0	0	0	0	26
Total	247	245	276	234	225

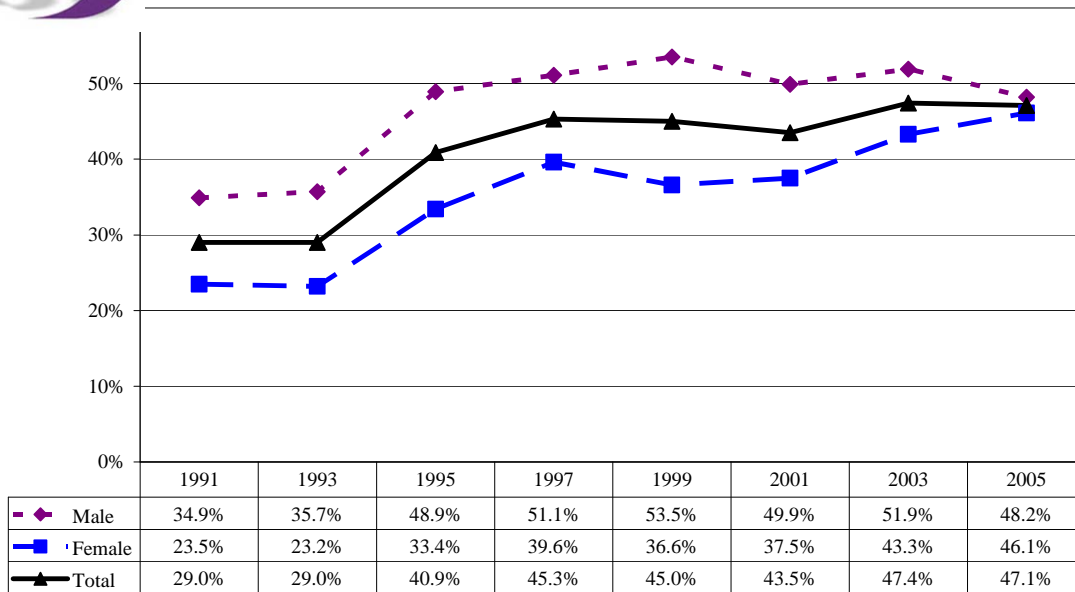
Source: The National Highway Traffic Administration's Fatality Analysis Reporting System Encyclopedia (FARS). Retrieved August 7, 2008 January 22, 2009 from <http://www-fars.nhtsa.dot.gov/QueryTool/QuerySection/SelectYear.aspx>

Juvenile Drug Use

The data in this section comes from the National Youth Risk Behavior Survey (YRBS). The national YRBS monitors priority health risk behaviors that contribute to the leading causes of death, disability, and social problems among youth and adults in the United States. The national YRBS is conducted every two years during the spring semester and provides data representative of 9th through 12th grade students in public and private schools throughout Dallas County.



Percentage of Dallas County students who used marijuana one or more times during their life.

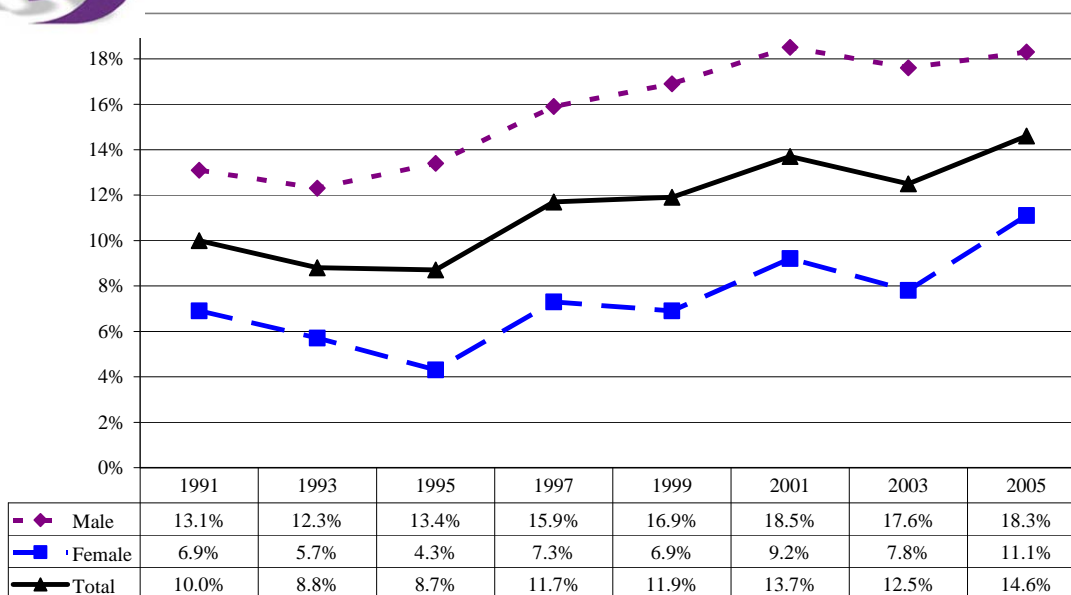


Note: Data is also available on the YRBS website by grade and ethnicity.

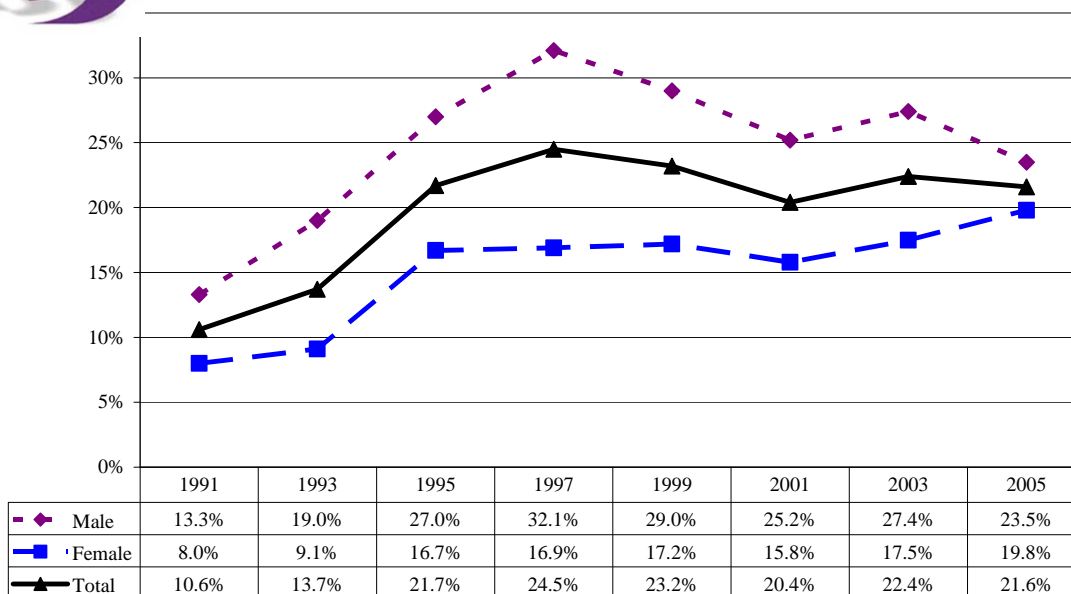
Source: Youth Risk Behavior Survey (YRBS). Retrieved June 6, 2008 from <http://apps.nccd.cdc.gov/yrbss/SelHealthTopic.asp?loc=DA>



Percentage of Dallas County students who tried marijuana for the first time before age 13 years.



Percentage of Dallas County students who used marijuana one or more times during the past 30 days.

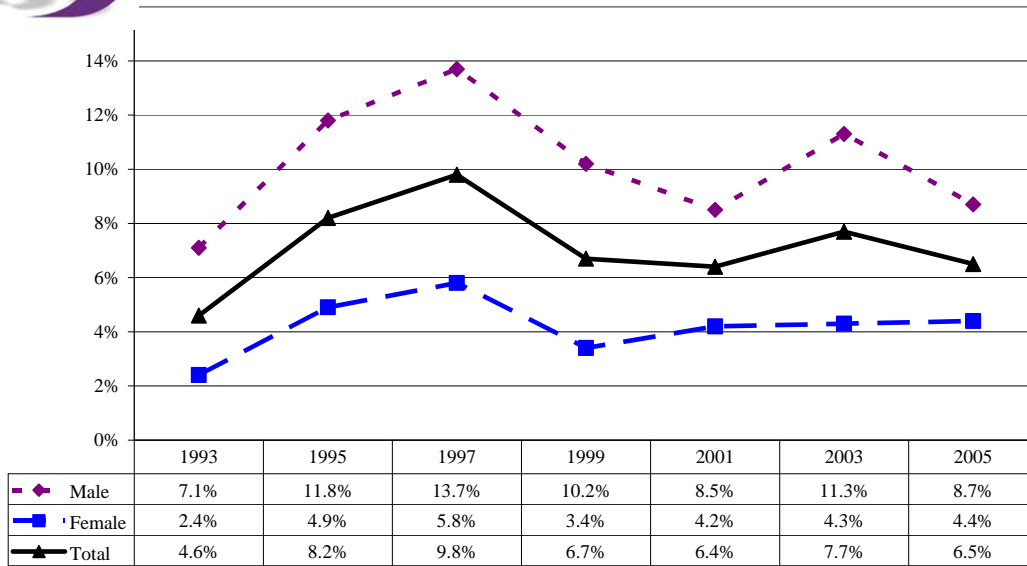


Note: Data is also available on the YRBS website by grade and ethnicity.

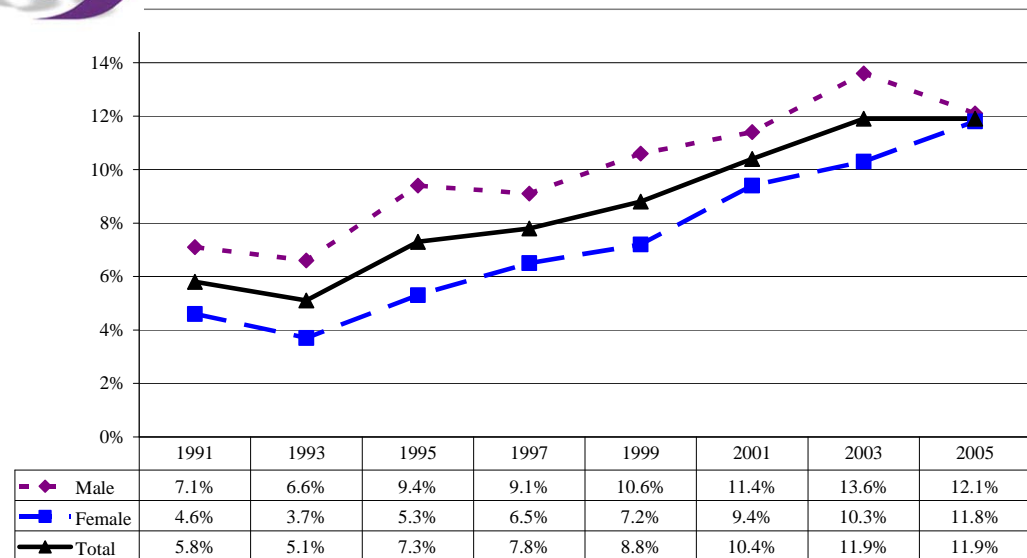
Source: Youth Risk Behavior Survey (YRBS). Retrieved June 6, 2008 from <http://apps.nccd.cdc.gov/yrbss/SelHealthTopic.asp?loc=DA>



Percentage of Dallas County students who used marijuana on school property one or more times during the past 30 days.



Percentage of Dallas County students who used any form of cocaine, including powder, crack, or freebase one or more times during their life.

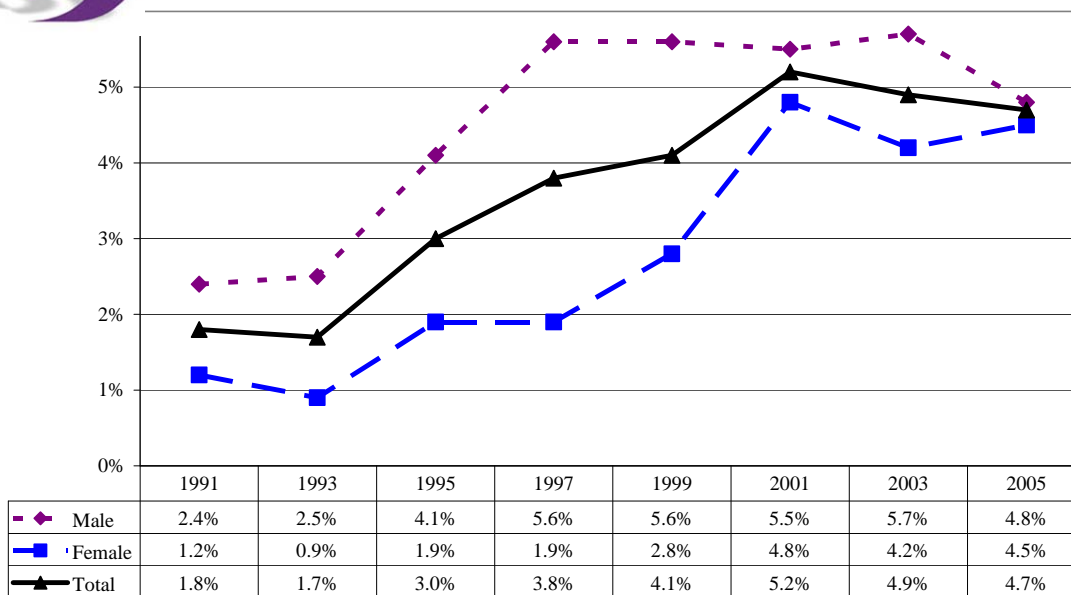


Note: Data is also available on the YRBS website by grade and ethnicity.

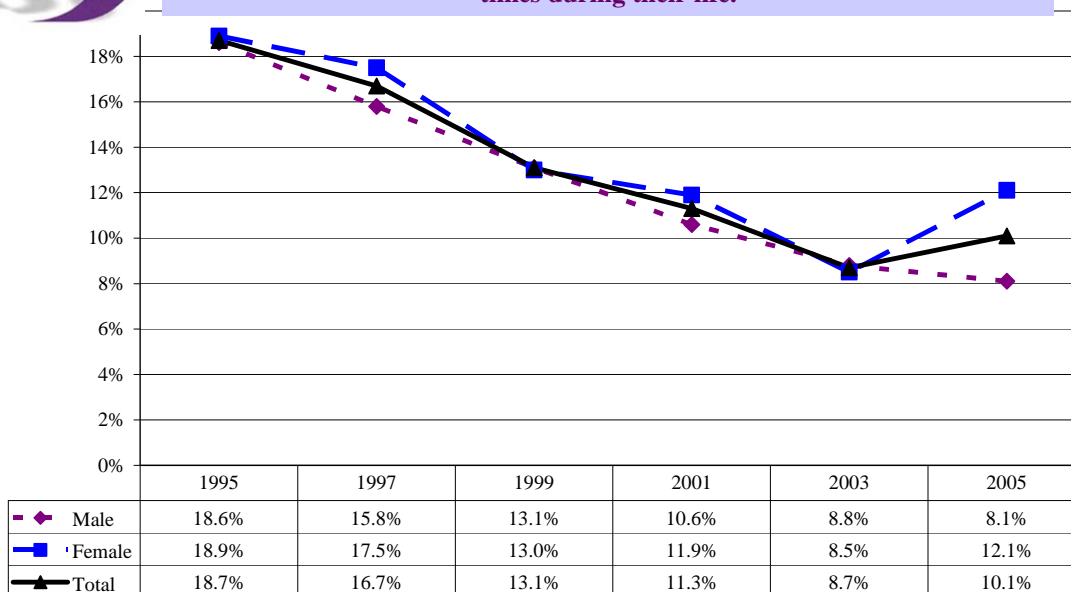
Source: Youth Risk Behavior Survey (YRBS). Retrieved June 6, 2008 from <http://apps.nccd.cdc.gov/yrbss/SelHealthTopic.asp?loc=DA>



Percentage of Dallas County students who used any form of cocaine, including powder, crack, or freebase one or more times during the past 30 days.



Percentage of Dallas County students who sniffed glue, breathed the contents of aerosol spray cans, or inhaled any paints or sprays to get high one or more times during their life.

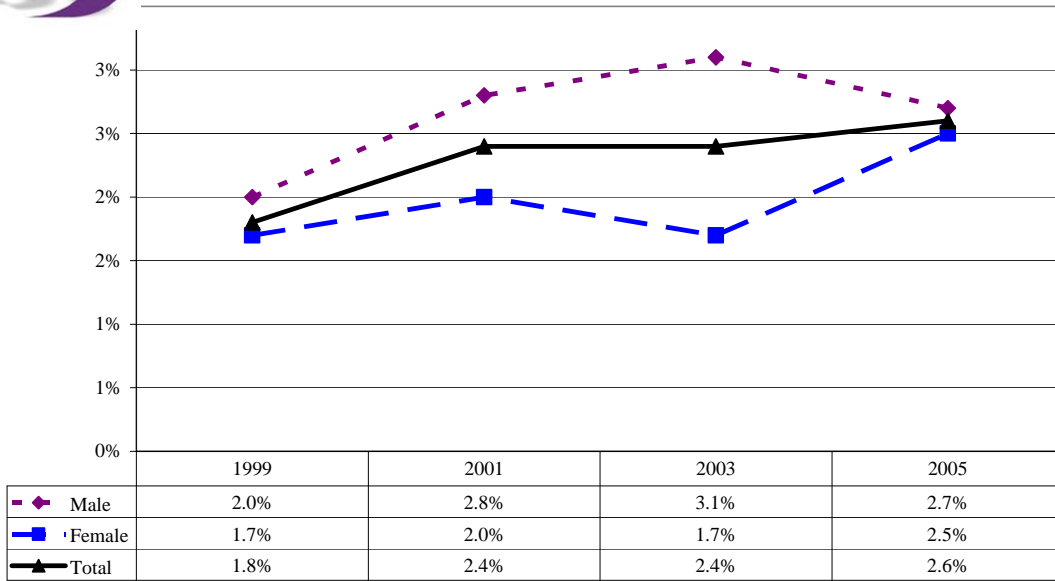


Note: Data is also available on the YRBS website by grade and ethnicity.

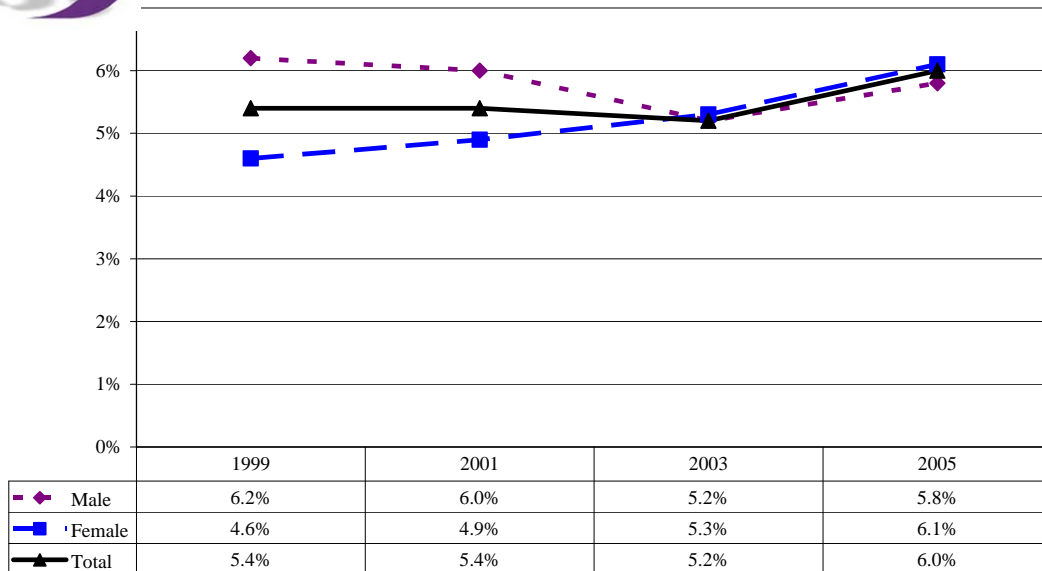
Source: Youth Risk Behavior Survey (YRBS). Retrieved June 6, 2008 from <http://apps.nccd.cdc.gov/yrbss/SelHealthTopic.asp?loc=DA>



Percentage of Dallas County students who used heroin one or more times during their life.



Percentage of Dallas County students who used methamphetamines one or more times during their life.

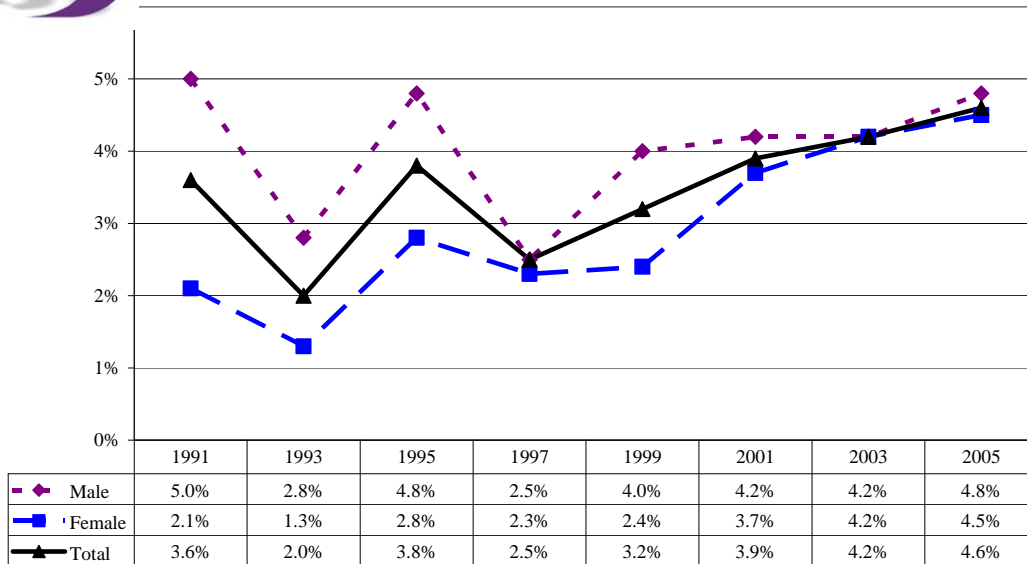


Note: Data is also available on the YRBS website by grade and ethnicity.

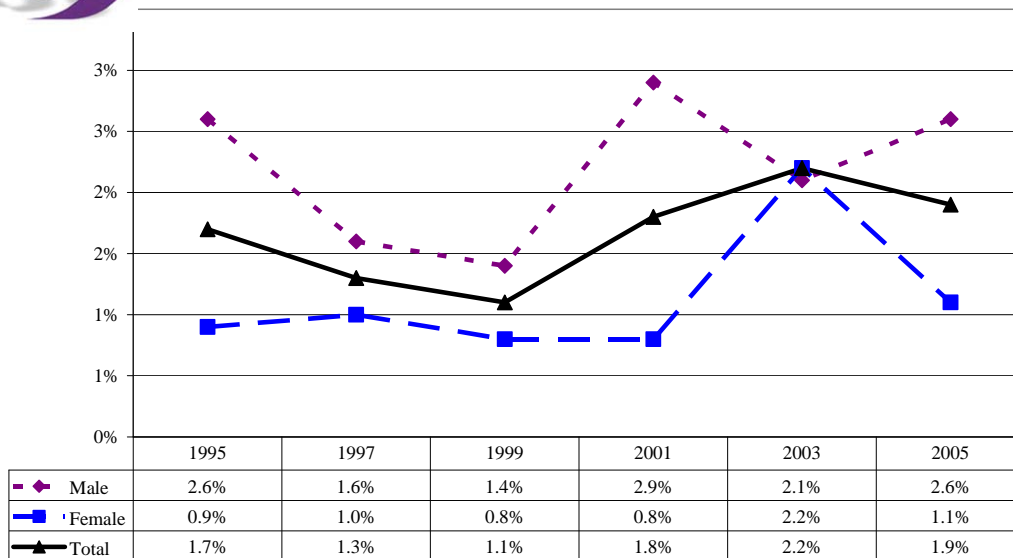
Source: Youth Risk Behavior Survey (YRBS). Retrieved June 6, 2008 from <http://apps.nccd.cdc.gov/yrbss/SelHealthTopic.asp?loc=DA>



Percentage of Dallas County students who took steroid pills or shots without a doctor's prescription one or more times during their life.



Percentage of Dallas County students who used a needle to inject any illegal drug into their body one or more times during their life.



Note: Data is also available on the BFRSS website by education level and income level.

Source: Youth Risk Behavior Survey (YRBS). Retrieved June 6, 2008 from <http://apps.nccd.cdc.gov/yrbss/SelHealthTopic.asp?loc=DA>

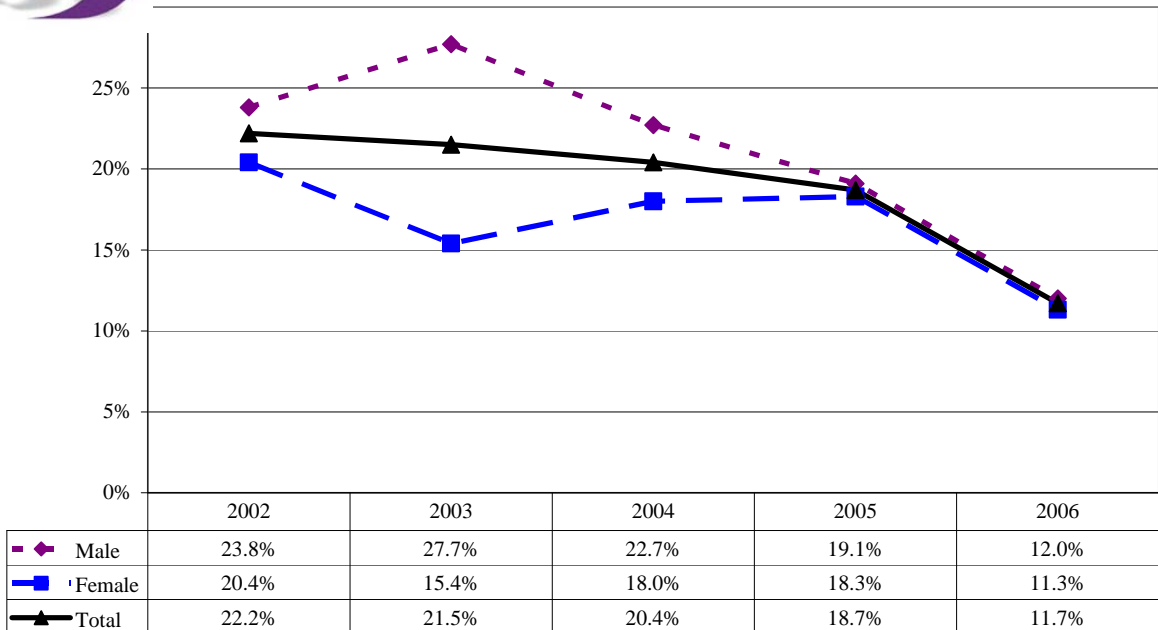
Adult Tobacco Use

The data in this section comes from the Behavioral Risk Factor Surveillance System (BRFSS). Conducted by the Centers for Disease Control and Prevention (CDC), the BFRSS collects data on health risk behaviors, preventive health practices, and health care access primarily related to chronic disease and injury. The BFRSS telephone survey is collected in all 50 states, the District of Columbia, Puerto Rico, the U.S. Virgin Islands, and Guam and is the largest telephone health survey in the world. Texas has stratified their samples to allow them to estimate prevalence for regions within the state.

The data in this section includes Dallas, Colin, Rockwall, Kaufman, Hunt, Elis, and Denton Counties.



Percentage of adults who report who have smoked 100 cigarettes in their lifetime and now smoke every day or some days, by gender.

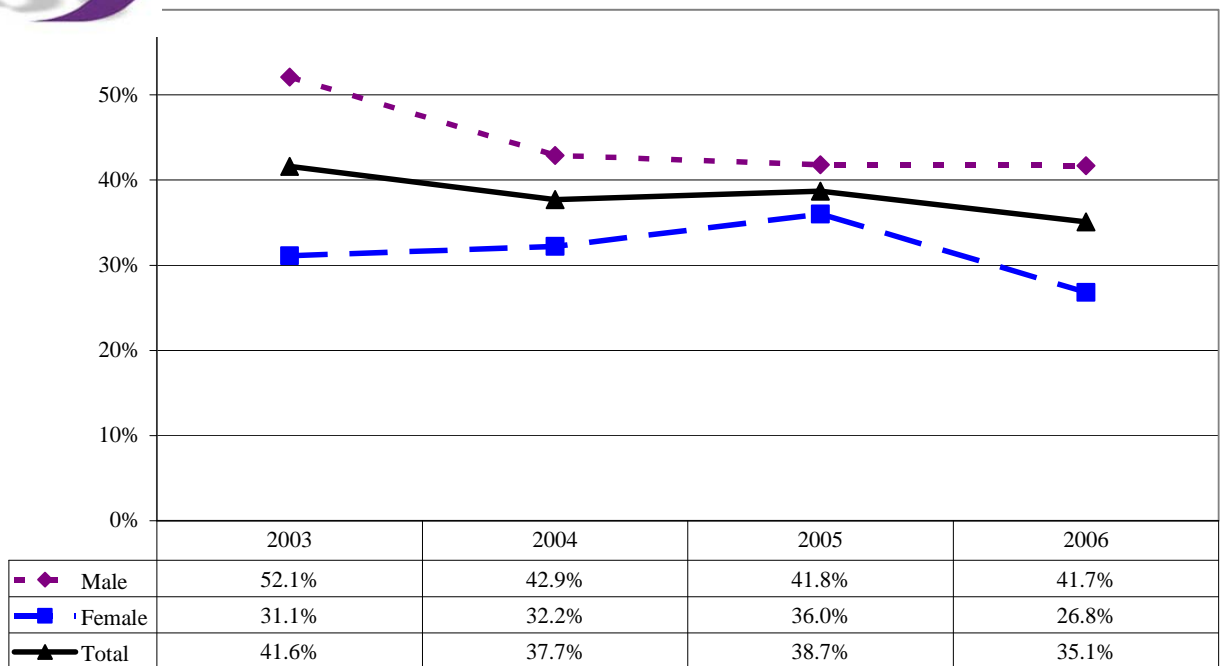


Note: Data is also available on the BFRSS website by ethnicity, age group, education level and income level.

Source: Behavioral Risk Factor Surveillance System (BRFSS). Retrieved June 6, 2008 from http://www.dshs.state.tx.us/chs/brfss/query/brfss_form.shtm



Percentage of adults who reports to have smoked 100 cigarettes or more in their entire life, by gender.

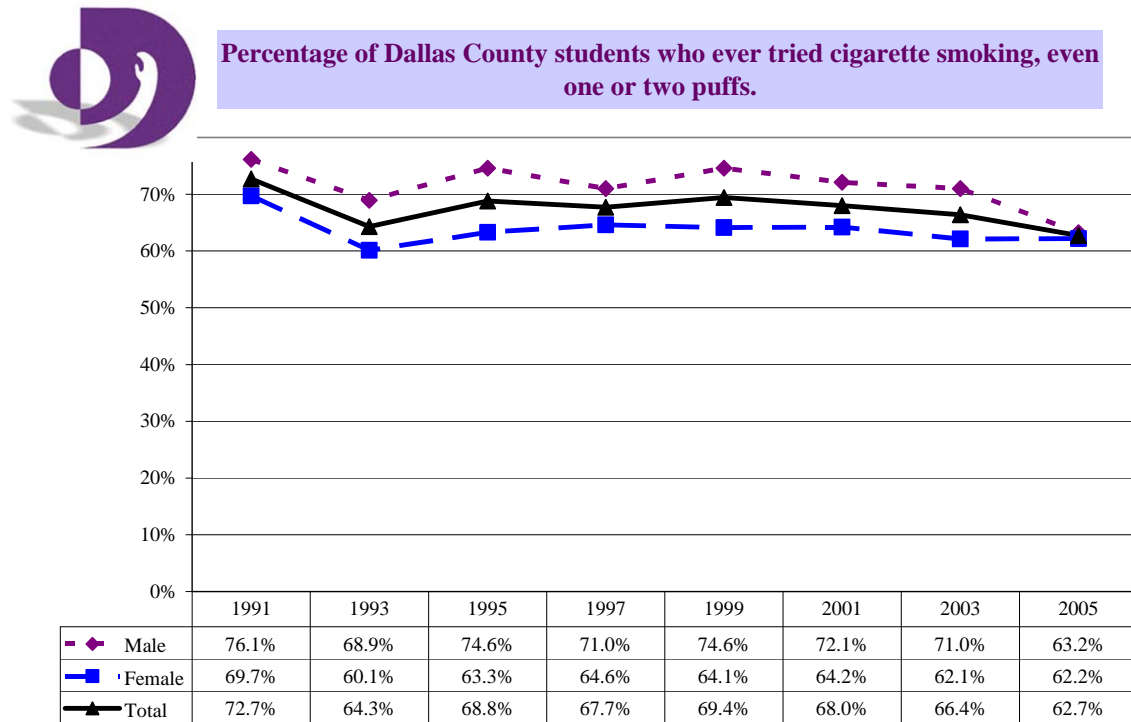


Note: Data is also available on the BFRSS website by ethnicity, age group, education level and income level.

Source: Behavioral Risk Factor Surveillance System (BRFSS). Retrieved June 6, 2008 from http://www.dshs.state.tx.us/chs/brfss/query/brfss_form.shtm

Juvenile Tobacco Use

The data in this section comes from the National Youth Risk Behavior Survey (YRBS). The national YRBS monitors priority health risk behaviors that contribute to the leading causes of death, disability, and social problems among youth and adults in the United States. The national YRBS is conducted every two years during the spring semester and provides data representative of 9th through 12th grade students in public and private schools throughout Dallas County.

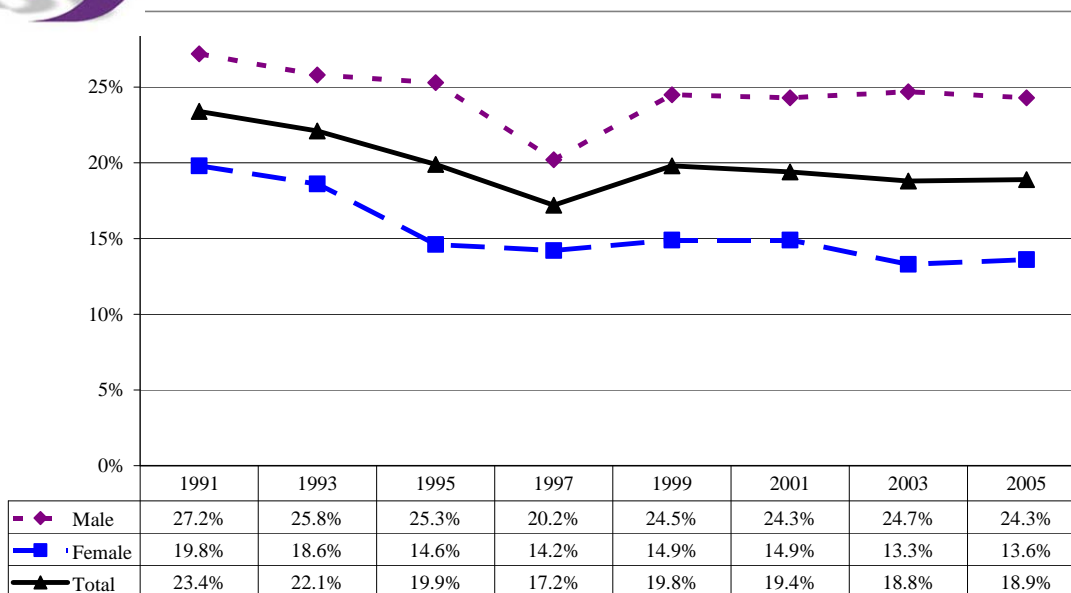


Note: Data is also available on the YRBS website by grade and ethnicity.

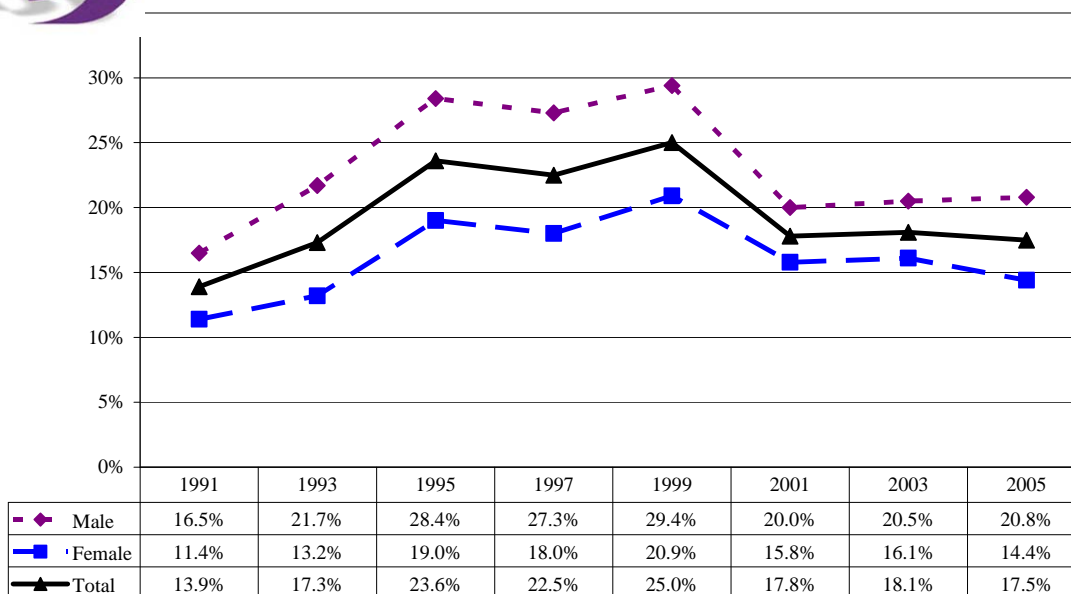
Source: Youth Risk Behavior Survey (YRBS). Retrieved June 6, 2008 from <http://apps.nccd.cdc.gov/yrbss/SelHealthTopic.asp?loc=DA>



Percentage of Dallas County students who smoked a whole cigarette for the first time before age 13 years.



Percentage of Dallas County students who smoked cigarettes on one or more of the past 30 days.

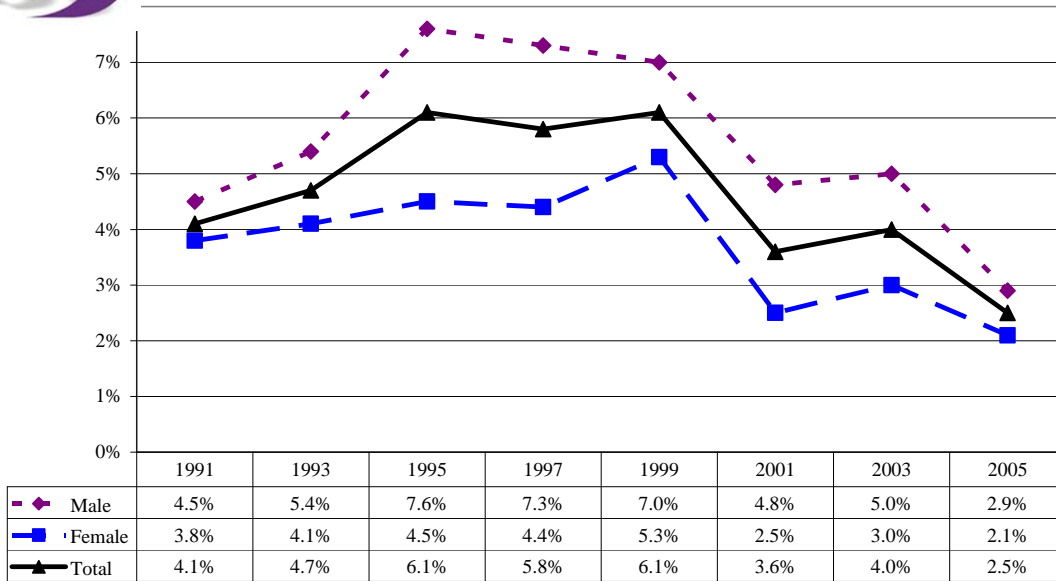


Note: Data is also available on the YRBS website by grade and ethnicity.

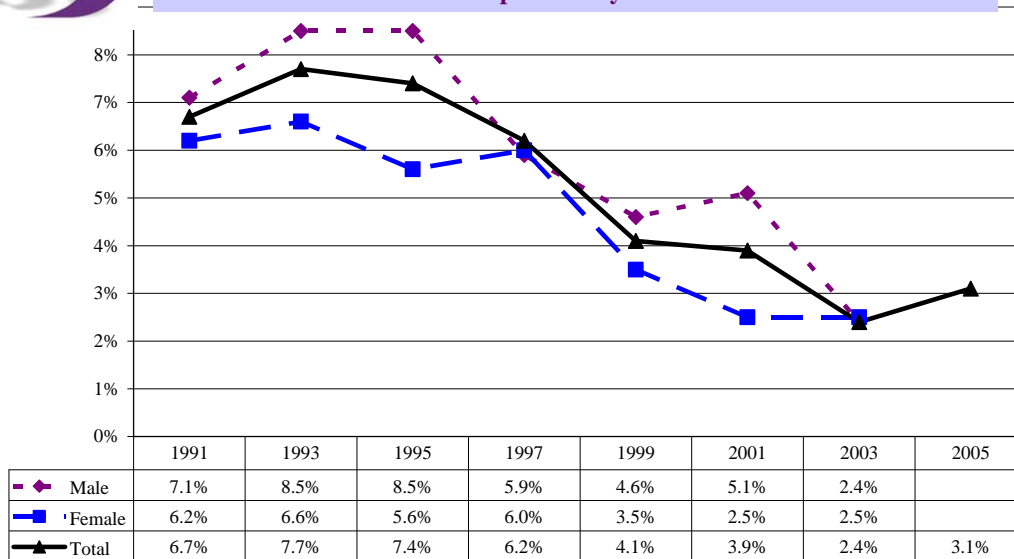
Source: Youth Risk Behavior Survey (YRBS). Retrieved June 6, 2008 from <http://apps.nccd.cdc.gov/yrbss/SelHealthTopic.asp?loc=DA>



Percentage of Dallas County students who smoked cigarettes on 20 or more of the past 30 days.



Among Dallas County students who are current smokers, the percentage who smoked more than 10 cigarettes per day on the days they smoked during the past 30 days.*



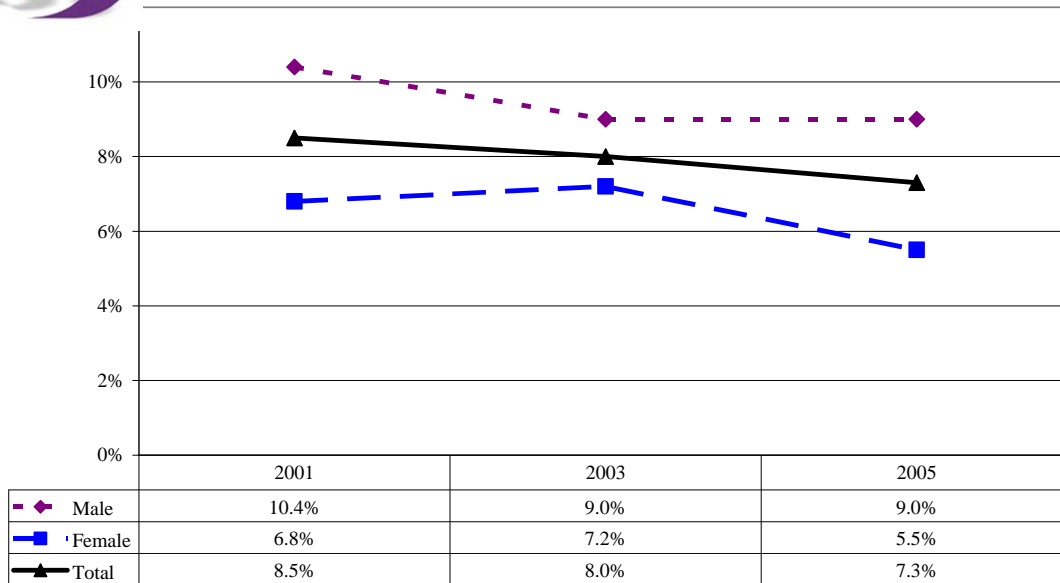
*Data from 2005 not available for gender.

Note: Data is also available on the YRBS website by grade and ethnicity.

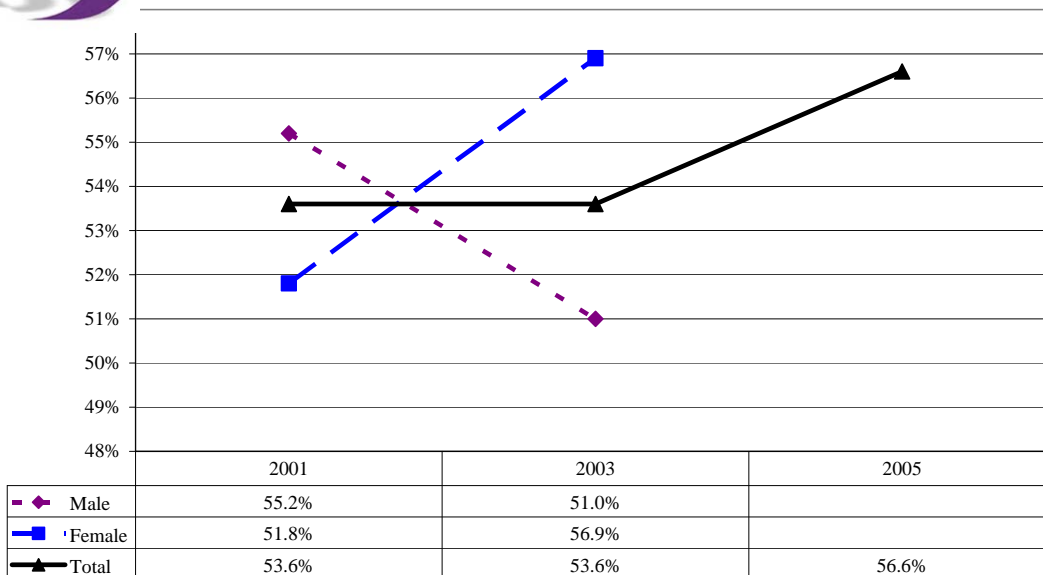
Source: Youth Risk Behavior Survey (YRBS). Retrieved June 6, 2008 from <http://apps.nccd.cdc.gov/yrbss/SelHealthTopic.asp?loc=DA>



Percentage of Dallas County students who ever smoked cigarettes daily, that is, at least one cigarette every day for 30 days.



Among Dallas County students who are current smokers, the percentage who tried to quit smoking during the past 12 months.*



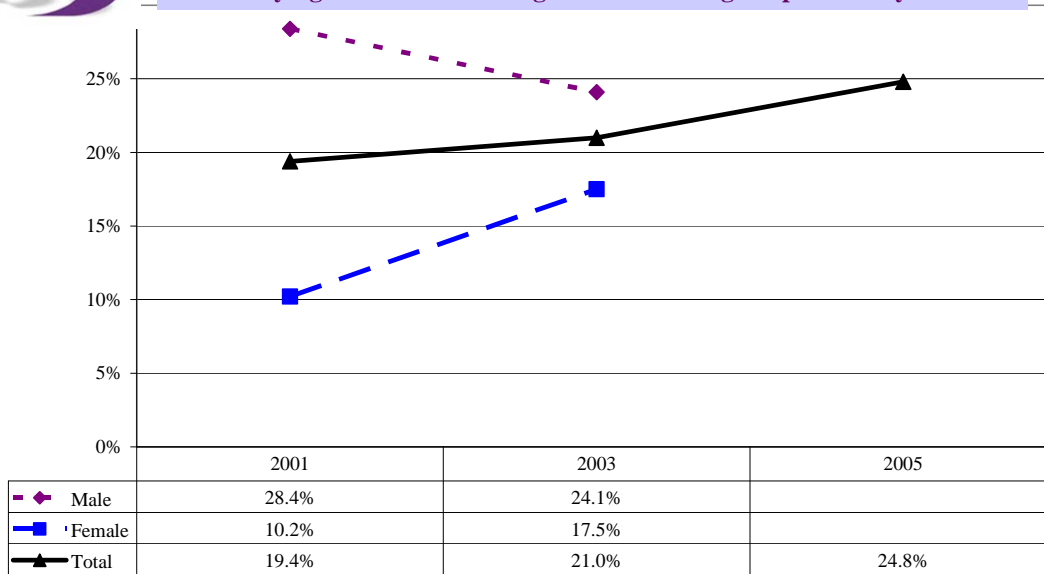
*Data from 2005 not available for gender.

Note: Data is also available on the YRBS website by grade and ethnicity.

Source: Youth Risk Behavior Survey (YRBS). Retrieved June 6, 2008 from <http://apps.nccd.cdc.gov/yrbss/SelHealthTopic.asp?loc=DA>



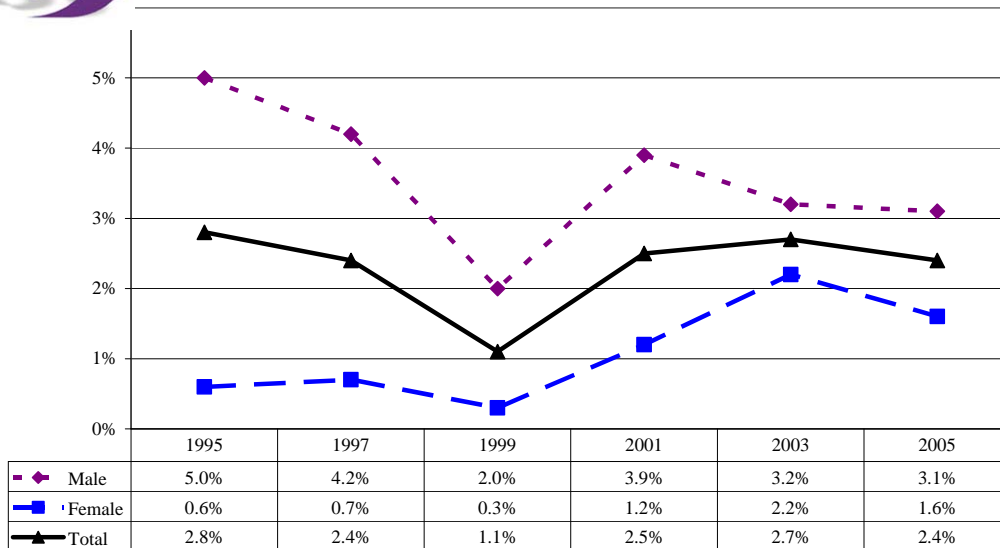
Among Dallas County students who are less than 18 years of age and who are current smokers, the percentage who usually got their own cigarettes by buying them in a store or gas station during the past 30 days.*



*Data from 2005 not available for gender.



Percentage of Dallas County students who used chewing tobacco, snuff, or dip on one or more of the past 30 days .

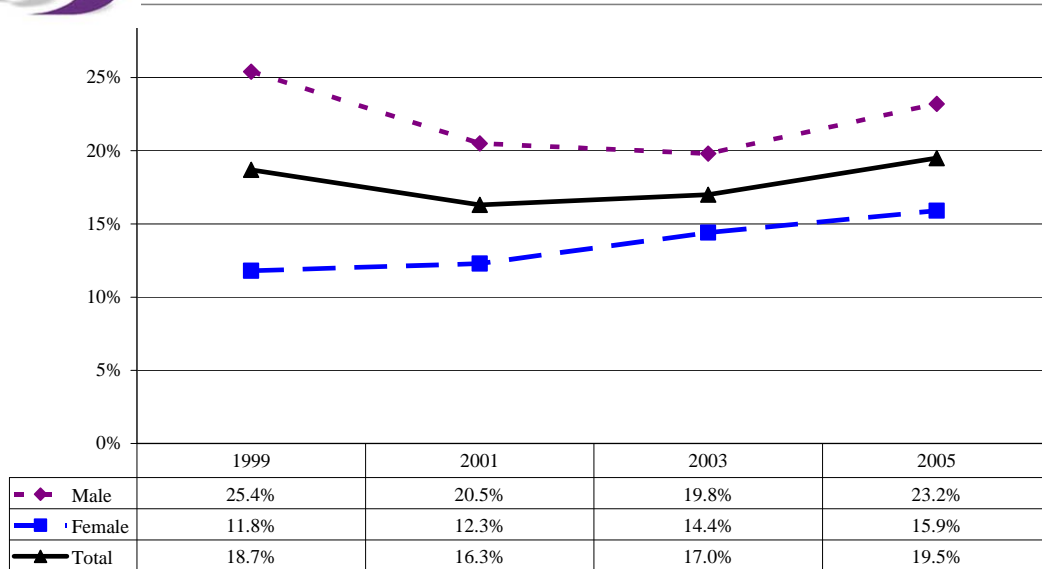


Note: Data is also available on the YRBS website by grade and ethnicity.

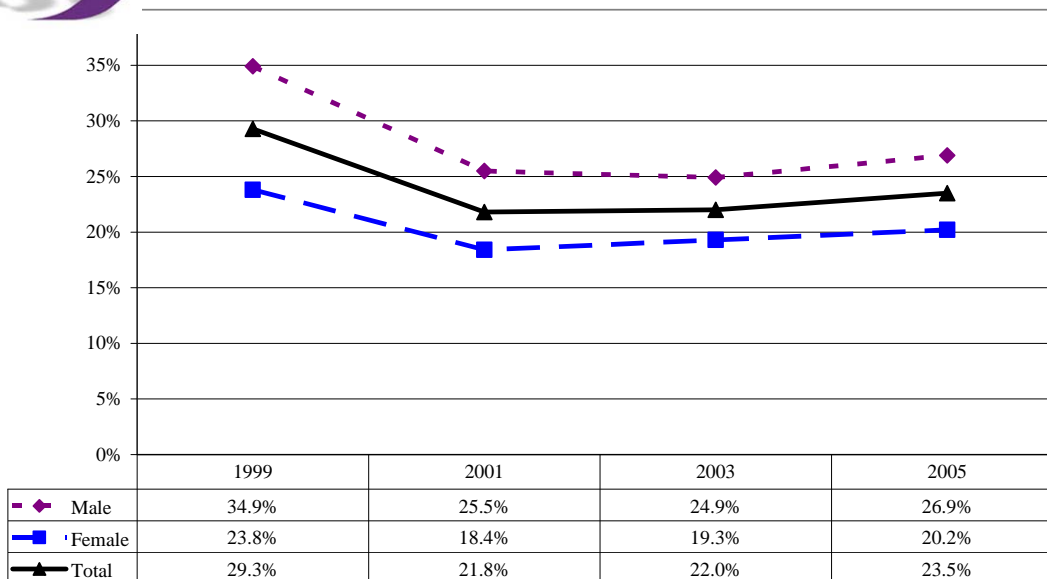
Source: Youth Risk Behavior Survey (YRBS). Retrieved June 6, 2008 from <http://apps.nccd.cdc.gov/yrbss/SelHealthTopic.asp?loc=DA>



Percentage of Dallas County students who smoked cigars, cigarillos, or little cigars on one or more of the past 30 days.



Percentage of Dallas County students who smoked cigarettes or cigars or used chewing tobacco, snuff, or dip on one or more of the past 30 days.



Note: Data is also available on the YRBS website by grade and ethnicity.

Source: Youth Risk Behavior Survey (YRBS). Retrieved June 6, 2008 from <http://apps.nccd.cdc.gov/yrbss/SelHealthTopic.asp?loc=DA>

Arrests for Alcohol and Drugs

The data in this section comes from the Texas Department of Public Safety. The Department of Public Safety compiles data submitted to the Uniform Crime Reporting Section by 1,020 Texas Sheriffs and Chiefs of Police.

Dallas County Arrests, 1997-2006

Arrest Category	Number of Arrests									
	1997	1998	1999	2000	2001	2002	2003	2004	2005	2006
DWI	8,687	8,673	8,307	8,654	7,906	7,594	8,204	9,112	9,123	8,127
Liquor Law Violations	782	1,050	906	813	1,067	1,039	1,046	1,349	1,213	1,468
Public Intoxication	26,713	23,343	20,583	20,490	20,530	18,508	17,799	18,043	18,599	18,962
Trafficking, All Drugs	1,172	1,623	1,616	1,612	1,605	1,397	1,412	1,347	1,201	18,962
Possession, All Drugs	10,908	11,268	10,783	9,887	8,530	6,976	7,790	7,907	9,466	10,625
Trafficking, Marijuana	62	62	66	73	85	262	312	214	130	88
Possession, Marijuana	5,451	5,279	5,012	4,617	3,877	3,197	3,673	3,556	4,175	4,599
All Drug Offenses	12,080	12,891	12,399	11,499	10,135	8,373	9,202	9,254	10,667	11,917
Violent Crimes	4,603	4,457	4,229	4,117	4,195	4,028	4,295	3,954	4,101	4,029

Source: Texas Department of Public Safety [Data File].

Data in this section comes from the Dallas Independent School District Police, which is a member of the Dallas County Cheese Heroin Task Force. Comprised of community leaders, their goal is to develop an action plan to address the heroin epidemic affecting Dallas County youth. Cheese heroin is a cheap and highly addictive recreational drug that became population in 2005. It is made by combing heroin and crushed tablets of nighttime pain relievers.

Cheese Arrests by Dallas Independent School District Police, 2005-2007

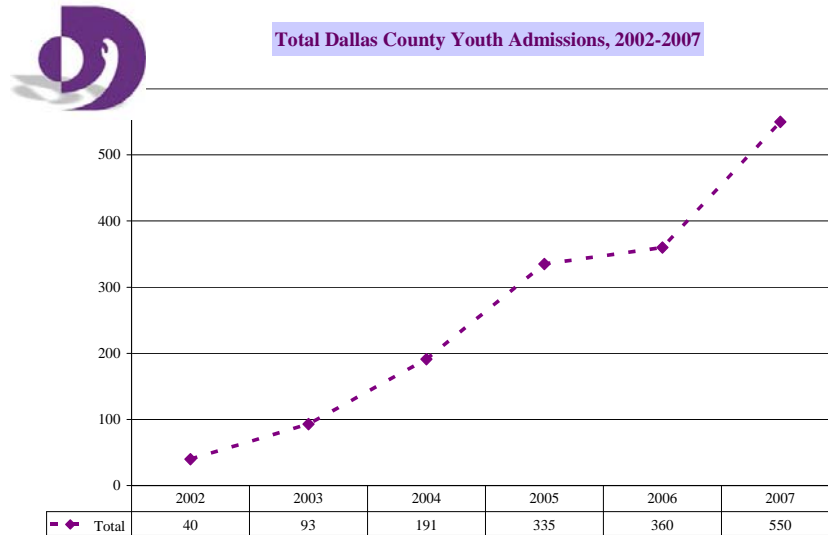
School	2005-06	2006-07*	Total
High schools			
Thomas Jefferson	43	27	70
North Dallas	3	26	29
W.T. White	6	9	15
Woodrow Wilson	1	2	3
Molina	2	0	2
Skyline	1	0	1
Sunset	1	0	1
Pinkston	0	1	1
Seagoville	1	0	1
Middle schools			
Cary	19	19	38
Marsh	9	10	19
Rusk	1	13	14
Walker	0	1	1
Spence	1	0	1
Elementary schools			
Preston Hollow	1	0	1
Alternative schools			
Village Fair	1	13	14
Off campus	0	1	1
Total	90	122	212

*Statistics through February

Source: Dallas Police Narcotics. Retrieved August 16, 2008 from www.tascaz.org/pdf/20070402_PS_cheese.pdf

Youth Treatment Data

The data in this section comes from the Texas Department of State Health Services (DSHS) client data system on clients admitted to treatment in DSHS-funded facilities. These facilities primarily serve individuals without behavioral health insurance coverage.



Dallas County Youth Admissions by Primary Problem Substance, 2002-2007

Primary Problem Substance	2002	2003	2004	2005	2006	2007
Heroin	0	0	3	19	61	174
Other Opiates	0	1	1	3	3	15
Alcohol	3	8	16	15	11	21
Barbiturates	0	0	1	1	0	3
Other Sedatives	0	0	3	2	3	12
Amphetamine/ Methamphetamine	5	22	33	82	42	21
Cocaine (powder)	6	17	34	34	40	53
Marijuana	18	36	87	165	184	228
Hallucinogens	0	0	1	0	0	0
Inhalants	0	1	2	2	1	3
Over the Counter Drugs	0	3	0	1	0	0
Tranquilizers	0	0	0	0	0	5
Other	0	1	0	3	0	0
Ecstasy	1	0	2	0	2	3
Rohypnol	0	0	0	0	0	2
Crack	7	3	8	8	11	6
PCP	0	1	0	0	2	1
Klonopin	0	0	0	0	0	3
Total	40	93	191	335	360	550

Source: Texas Department of State Health Services. [Data File].

Dallas County Youth Admissions by Characteristics at Admission, 2007

Primary Substance for Admission	Total Admissions	Average Age	% With No Prior Treatment	% Using Needles	% With History Of Iv Drug Use	% Reporting Drug/Alcohol Problems
Total	550	16.1	51.3	2.7	6.2	73.1
Heroin	174	15.9	38.5	4.0	8.6	71.3
Other opiates	15	15.5	26.7	0.0	6.7	60.0
Alcohol	21	16.5	47.6	0.0	0.0	81.0
Barbiturates	3	16.0	66.7	0.0	0.0	66.7
Other sedatives	12	16.5	75.0	0.0	8.3	75.0
Amphetamine/ Methamphetamine	21	17.0	66.7	19.0	33.3	81.0
Cocaine (powder)	53	16.3	60.4	3.8	9.4	75.5
Marijuana	228	16.1	57.5	0.4	2.2	72.8
Inhalants	3	14.3	33.3	0.0	0.0	66.7
Tranquilizers	5	17.4	60.0	20.0	0.0	80.0
Ecstasy	3	16.3	33.3	0.0	0.0	100.0
Rohypnol	2	15.0	50.0	0.0	0.0	50.0
Crack	6	16.2	66.7	0.0	0.0	100.0
PCP	1	13.0	0.0	0.0	0.0	100.0
Klonopin	3	16.3	100.0	0.0	0.0	33.3

Dallas County Youth Admissions by Characteristics at Admission, 2007 (continued)

Primary Substance For Admission	% Male	% Black	% White	% Hispanic	% Involved With Criminal Justice Or Legal System	% With History Of Gang Involvement	% Who Use Tobacco Daily
Total	48.4	7.3	28.2	62.5	59.6	26.2	48.0
Heroin	51.7	1.7	5.7	92.0	46.6	29.9	31.6
Other opiates	33.3	0.0	20.0	80.0	60.0	40.0	26.7
Alcohol	38.1	4.8	52.4	42.9	52.4	38.1	52.4
Barbiturates	0.0	0.0	33.3	66.7	0.0	66.7	0.0
Other sedatives	58.3	0.0	75.0	25.0	75.0	16.7	58.3
Amphetamine/ Methamphetamine	14.3	0.0	90.5	9.5	47.6	9.5	90.5
Cocaine (powder)	34.0	3.8	45.3	49.1	52.8	20.8	60.4
Marijuana	57.9	12.7	30.7	54.4	72.4	25.0	52.2
Inhalants	33.3	0.0	33.3	66.7	66.7	33.3	0.0
Tranquilizers	0.0	0.0	40.0	60.0	100.0	40.0	80.0
Ecstasy	33.3	66.7	33.3	0.0	66.7	0.0	100.0
Rohypnol	0.0	0.0	100.0	0.0	100.0	0.0	100.0
Crack	0.0	33.3	33.3	0.0	33.3	0.0	83.3
PCP	0.0	100.0	0.0	0.0	100.0	100.0	100.0
Klonopin	33.3	0.0	0.0	33.3	33.3	0.0	66.7

Source: Texas Department of State Health Services. [Data File].

Dallas County Youth Admissions by Characteristics at Admission, 2007 (continued)

Primary Substance For Admission	% Homeless	% Who Live With Parent(S)	% Who Have Supportive Adult	% With A Parent Who Abuses Substance(S)
Total	0.7	87.8	99.1	27.6
Heroin	0.0	97.1	99.4	20.7
Other opiates	0.0	86.7	100.0	46.7
Alcohol	0.0	100.0	95.2	42.9
Barbiturates	0.0	100.0	100.0	100.0
Other sedatives	0.0	83.3	100.0	41.7
Amphetamine/ Methamphetamine	4.8	61.9	90.5	42.9
Cocaine (powder)	1.9	79.2	100.0	34.0
Marijuana	0.0	86.4	99.6	25.9
Inhalants	0.0	100.0	100.0	33.3
Tranquilizers	0.0	80.0	100.0	0.0
Ecstasy	0.0	100.0	100.0	33.3
Rohypnol	0.0	100.0	100.0	0.0
Crack	33.3	16.7	100.0	66.7
PCP	0.0	100.0	100.0	0.0
Klonopin	0.0	33.3	100.0	0.0

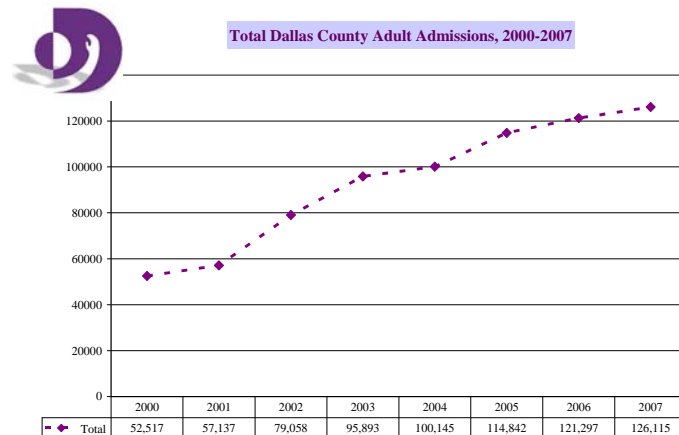
Dallas County Youth Admissions by Characteristics at Admission, 2007 (continued)

Primary Substance For Admission	% With Sickness And/Or Health Problems	% With Job Or School Problems	% With Family Problems	% With Social/Peer Problems	% With Psych/Emotional Problems
Total	23.1	46.0	48.7	30.9	30.2
Heroin	25.3	44.8	41.4	24.1	13.8
Other opiates	6.7	40.0	33.3	26.7	20.0
Alcohol	23.8	61.9	61.9	47.6	47.6
Barbiturates	33.3	66.7	66.7	33.3	66.7
Other sedatives	25.0	50.0	50.0	50.0	33.3
Amphetamine/ Methamphetamine	23.8	52.4	61.9	38.1	52.4
Cocaine (powder)	18.9	54.7	58.5	43.4	45.3
Marijuana	22.8	42.5	49.1	31.1	35.1
Inhalants	0.0	66.7	33.3	66.7	0.0
Tranquilizers	40.0	40.0	20.0	40.0	60.0
Ecstasy	0.0	33.3	66.7	0.0	0.0
Rohypnol	100.0	50.0	50.0	0.0	100.0
Crack	33.3	33.3	100.0	16.7	50.0
PCP	0.0	100.0	100.0	0.0	0.0
Klonopin	0.0	66.7	66.7	0.0	0.0

Source: Texas Department of State Health Services. [Data File].

Adult Treatment Data

The data in this section comes from the Texas Department of State Health Services (DSHS) client data system on clients admitted to treatment in DSHS-funded facilities. These facilities primarily serve individuals without behavioral health insurance coverage.



Dallas County Adult Admissions by Primary Problem Substance, 2002-2007

Primary Problem Substance	2000	2001	2002	2003	2004	2005	2006	2007
None	0	2	93	96	10	18	15	0
Heroin	4,393	4,606	6,704	7,830	8,036	7,528	8,042	8,199
Non-RX Methadone	43	49	72	80	58	85	93	106
Other Opiates	874	1,353	2,066	2,764	3,401	3,433	3,873	4,464
Alcohol	12,178	13,824	18,498	21,117	19,736	19,780	20,921	21,447
Barbiturates	55	74	81	65	60	97	75	80
Other Sedatives	198	301	427	549	663	834	883	1,157
Amphetamine/ Methamphetamine	1,823	2,547	3,753	5,438	6,850	10,281	10,121	9,367
Cocaine(powder)	3,541	3,388	4,648	5,657	6,009	7,539	8,759	9,236
Marijuana	3,334	3,791	5,243	6,650	7,689	9,827	11,203	13,111
Hallucinogens	55	69	76	70	52	68	65	86
Inhalants	63	80	74	90	63	49	41	31
Over the Counter Drugs	14	16	14	26	4	20	14	16
Tranquilizers	126	116	118	72	60	40	64	113
Other	57	44	124	114	90	374	307	95
Ecstasy	36	50	92	62	80	130	136	179
Anabolic Steroids	8	3	2	4	5	12	19	20
Rohypnol	10	11	15	6	9	4	2	9
Crack	7,130	7,083	9,957	11,924	11,602	11,520	11,201	11,060
Ephedrine	10	16	16	8	9	8	6	3
GHB	4	3	17	16	17	30	23	21
PCP	78	93	181	263	195	193	272	368
Ketamine	0	0	1	2	3	2	7	5
Klonopin	0	3	13	18	20	17	13	29
Total	34,030	37,522	52,285	62,921	64,721	71,889	76,155	79,202

Source: Texas Department of State Health Services. [Data File].

Dallas County Adult Admissions by Characteristics at Admission, 2007

Primary Substance For Admission	Total Admissions	Average Age	Average Age Of First Use	Average Lag Of 1st Use To Admission	% With No Prior Treatment	% Married
Total	7,259	36.3	20.1	16	45.8	10.8
Heroin	1,137	34.0	21.6	13	34.5	11.6
Other opiates	348	36.7	25.9	11	37.6	16.1
Alcohol	2,036	40.9	15.0	26	40.4	10.6
Barbiturates	3	33.0	23.0	7	33.3	66.7
Other sedatives	61	31.9	21.7	10	37.7	14.8
Amphetamine/ Methamphetamine	980	31.7	20.2	12	55.9	10.4
Cocaine (powder)	463	32.3	20.6	12	60.7	10.4
Marijuana	636	28.0	15.2	13	69.3	10.8
Hallucinogens	8	28.5	16.6	12	50.0	12.5
Inhalants	3	31.0	23.3	8	66.7	33.3
Tranquilizers	10	26.4	20.1	7	10.0	0.0
Other	4	35.5	23.5	13	75.0	0.0
Ecstasy	11	28.4	20.3	7	72.7	18.2
Anabolic	4	32.3	20.3	12	25.0	25.0
Rohypnol	1	25.0	NA	13	100.0	0.0
Crack	1,494	40.2	26.1	14	42.3	9.5
GHB	11	34.2	26.0	10	63.6	9.1
PCP	46	28.5	19.4	9	52.2	2.2
Klonopin	3	38.3	29.3	9	0.0	0.0

Dallas County Adult Admissions by Characteristics at Admission, 2007 (continued)

Primary Substance For Admission	% Male	% Using Needles	% With History Of IV Drug Use	% Black	% White	% Hispanic
Total	50.8	19.9	32.3	31.3	53.5	13.7
Heroin	66.5	71.8	69.7	18.6	50.0	30.3
Other opiates	34.5	13.8	33.3	9.2	84.5	5.2
Alcohol	67.3	6.4	23.2	22.7	64.8	10.9
Barbiturates	66.7	0.0	66.7	0.0	100.0	0.0
Other sedatives	44.3	6.6	23.0	3.3	85.2	9.8
Amphetamine/ Methamphetamine	30.9	28.2	42.3	1.9	85.1	9.7
Cocaine (powder)	41.5	18.8	23.3	43.6	33.7	22.5
Marijuana	50.6	1.7	8.2	53.1	33.2	12.9
Hallucinogens	37.5	0.0	0.0	75.0	12.5	12.5
Inhalants	66.7	0.0	33.3	0.0	33.3	66.7
Tranquilizers	20.0	0.0	20.0	0.0	100.0	0.0
Other	25.0	0.0	0.0	75.0	0.0	25.0
Ecstasy	45.5	0.0	9.1	45.5	27.3	27.3
Anabolic	50.0	0.0	0.0	0.0	75.0	25.0
Rohypnol	100.0	0.0	0.0	0.0	0.0	100.0
Crack	37.1	4.7	24.5	63.7	27.5	7.7
GHB	27.3	0.0	0.0	0.0	81.8	18.2
PCP	39.1	2.2	4.3	95.7	4.3	0.0
Klonopin	33.3	0.0	66.7	0.0	100.0	0.0

Source: Texas Department of State Health Services. [Data File].

Dallas County Adult Admissions by Characteristics at Admission, 2007 (continued)

Primary Substance for Admission	% employed	Average months employed over last 12 months	% involved with Criminal justice or legal system	Average education	% homeless	Average income at admission
Total	10.3	2.0	36.8	11.6	29.5	\$1,860
Heroin	5.0	1.3	23.0	11.5	29.2	\$898
Other opiates	8.3	2.0	28.7	11.9	25.3	\$2,242
Alcohol	9.9	2.2	26.6	11.9	36.0	\$1,745
Barbiturates	0.0	0.7	0.0	13.3	0.0	\$667
Other sedatives	3.3	1.9	29.5	11.9	26.2	\$2,283
Amphetamine/ Methamphetamine	13.0	2.4	55.2	11.5	23.3	\$2,725
Cocaine (powder)	15.1	2.2	49.5	11.5	20.3	\$2,088
Marijuana	22.2	2.6	64.3	11.3	7.7	\$1,721
Hallucinogens	37.5	3.4	37.5	11.0	25.0	\$1,714
Inhalants	0.0	0.0	33.3	12.0	33.3	\$0
Tranquilizers	0.0	2.8	40.0	12.3	0.0	\$2,348
Other	0.0	1.0	50.0	11.0	0.0	\$340
Ecstasy	54.5	3.7	63.6	11.9	18.2	\$4,136
Anabolic	0.0	0.0	50.0	12.0	0.0	\$0
Rohypnol	100.0	1.0	100.0	12.0	0.0	\$0
Crack	6.8	1.5	34.9	11.6	39.2	\$2,082
GHB	27.3	2.5	45.5	12.2	36.4	\$0
PCP	13.0	2.0	45.7	11.1	17.4	\$1,531
Klonopin	0.0	2.3	33.3	12.0	33.3	\$2,692

Dallas County Adult Admissions by Characteristics at Admission, 2007 (continued)

Primary Substance for Admission	# of women pregnant at admission	% on medication	% with an emergency room visit	% with sickness and/or health problems	% with employment problems
Total	154	26.2	36.5	36.7	67.3
Heroin	15	17.9	28.8	38.5	83.3
Other opiates	3	35.9	38.8	47.7	77.3
Alcohol	10	30.0	41.1	41.3	79.5
Barbiturates	0	33.3	66.7	33.3	66.7
Other sedatives	1	32.8	44.3	37.7	73.8
Amphetamine/ Methamphetamine	44	23.4	34.2	27.6	51.4
Cocaine (powder)	15	22.7	36.9	29.4	53.1
Marijuana	23	15.6	26.4	28.5	44.2
Hallucinogens	1	37.5	75.0	75.0	87.5
Inhalants	0	33.3	0.0	0.0	66.7
Tranquilizers	0	50.0	50.0	10.0	60.0
Other	0	50.0	25.0	25.0	25.0
Ecstasy	2	27.3	9.1	0.0	36.4
Anabolic	0	25.0	0.0	0.0	75.0
Rohypnol	0	100.0	0.0	0.0	0.0
Crack	39	32.1	40.8	39.1	61.2
GHB	0	54.5	27.3	9.1	45.5
PCP	1	15.2	41.3	21.7	60.9
Klonopin	0	66.7	33.3	66.7	100.0

Dallas County Adult Admissions by Characteristics at Admission, 2007 (continued)

Primary Substance for Admission	% with family and/or marital problems	% with social/peer problems	% with psych/emotional problems	% reporting drug/alcohol problems
Total	64.7	62.3	53.3	76.3
Heroin	81.4	79.6	51.3	89.3
Other opiates	74.1	72.4	64.9	85.1
Alcohol	77.2	76.4	59.5	85.7
Barbiturates	33.3	33.3	66.7	66.7
Other sedatives	78.7	77.0	63.9	83.6
Amphetamine/ Methamphetamine	50.0	46.4	48.6	63.1
Cocaine (powder)	49.2	44.9	45.8	64.1
Marijuana	40.6	39.6	36.8	51.9
Hallucinogens	50.0	50.0	62.5	87.5
Inhalants	100.0	100.0	66.7	100.0
Tranquilizers	90.0	80.0	70.0	90.0
Other	25.0	25.0	25.0	25.0
Ecstasy	9.1	18.2	18.2	27.3
Anabolic	75.0	75.0	50.0	75.0
Rohypnol	0.0	0.0	0.0	0.0
Crack	57.7	53.2	56.2	75.0
GHB	45.5	45.5	45.5	45.5
PCP	58.7	52.2	41.3	71.7
Klonopin	100.0	100.0	100.0	100.0

Source: Texas Department of State Health Services. [Data File].

Violent Crime

The data in this section comes from the Texas Department of Public Safety. The Department of Public Safety compiles data submitted to the Uniform Crime Reporting Section by 1,020 Texas Sheriffs and Chiefs of Police. These agencies report the number of known index crime offenses from their records of complaints from victims, reports from witnesses, and from crimes discovered by the agency during its operation. Duplicate and false reports are later removed. The number of offenses is reported without regard to whether arrests are made, stolen property recovered, or prosecution took place.

Index Crimes by Agency for Dallas County, 2006

Police Department	Population		Murder	Rape	Robbery	Aggravated Assault
Dallas (MIP)	1,248,223	number of offenses	187	665	6,914	7,292
		rate per 100,000	15	53.3	553.9	584.2
Addison PD	14,054	number of offenses	3	5	36	58
		rate per 100,000	21.3	35.6	256.2	412.7
Balch Springs PD	20,027	number of offenses	1	22	35	65
		rate per 100,000	5	109.9	174.8	324.6
Carrollton PD (MIP)	122,239	number of offenses	5	6	87	131
		rate per 100,000	4.1	5	71.2	107.2
Cedar Hill PD	42,760	number of offenses	2	6	30	79
		rate per 100,000	4.7	14	70.2	184.8
Cockrell Hill PD	4,411	number of offenses	0	0	3	8
		rate per 100,000	0	0	68	181.4
Coppell PD	39,801	number of offenses	0	2	11	16
		rate per 100,000	0	5	27.6	40.2
DeSoto PD	45,918	number of offenses	2	6	34	61
		rate per 100,000	4.4	13.1	74	132.8
Duncanville PD	36,146	number of offenses	1	12	60	37
		rate per 100,000	2.8	33.2	166	102.4
Farmers Branch PD	27,238	number of offenses	1	3	29	32
		rate per 100,000	3.7	11	106.5	117.5
Garland PD (MIP)	222,477	number of offenses	3	50	223	300
		rate per 100,000	1.3	22.5	100.2	134.8
Grand Prairie PD (MIP)	148,427	number of offenses	3	69	156	262
		rate per 100,000	2	46.5	105.1	176.5
Highland Park PD (IBR)	9,042	number of offenses	0	0	1	5
		rate per 100,000	0	0	11.1	55.3
Hutchins PD	3,024	number of offenses	0	2	5	10
		rate per 100,000	0	66.1	165.3	330.7
Irving PD (MIP)	199,137	number of offenses	3	48	264	535
		rate per 100,000	1.5	24.1	132.6	268.7
Lancaster PD (IBR)	33,146	number of offenses	3	10	17	145
		rate per 100,000	9.1	30.2	51.3	437.5

Continued on next page.

Police Department	Population		Murder	Rape	Robbery	Aggravated Assault
Mesquite PD (MIP)	133,583	number of offenses	5	10	171	310
		rate per 100,000	3.7	7.5	128	232.1
Richardson PD (IBR MIP)	101,998	number of offenses	3	12	98	122
		rate per 100,000	2.9	11.8	96.1	119.6
Sasche	17,491	number of offenses	0	3	0	8
		rate per 100,000	0	17.2	0	45.7
Seagoville PD	11,427	number of offenses	0	2	12	24
		rate per 100,000	0	17.5	105	210
University Park PD	24,481	number of offenses	0	2	9	9
		rate per 100,000	0	8.2	36.8	36.8
Wilmer PD	3,672	number of offenses	0	0	2	11
		rate per 100,000	0	0	54.5	299.6
UT Med Sch Dallas PD	0	number of offenses	0	1	0	1
		rate per 100,000	0	0	0	0
UT Dallas PD	0	number of offenses	0	0	1	5
		rate per 100,000	0	0	0	0
Eastfield College PD	0	number of offenses	0	0	1	0
		rate per 100,000	0	0	0	0
Rowlett PD (IBR)	55,185	number of offenses	3	8	13	41
		rate per 100,000	5.4	14.5	23.6	74.3
Richland College PD	0	number of offenses	0	0	5	0
		rate per 100,000	0	0	0	0
North Lake College PD	0	number of offenses	0	0	0	0
		rate per 100,000	0	0	0	0
Mountain View College PD	0	number of offenses	0	0	0	1
		rate per 100,000	0	0	0	0
Glenn Heights PD	9,588	number of offenses	0	1	4	26
		rate per 100,000	0	10.4	41.7	271.2
Dallas Co Hosp Dist PD	0	number of offenses	0	1	1	3
		rate per 100,000	0	0	0	0
Baylor Hlth Care Sys PD	0	number of offenses	0	0	1	3
		rate per 100,000	0	0	0	0
So Methodist Univ PD	0	number of offenses	0	6	0	0
		rate per 100,000	0	0	0	0
Ovilla PD	3,887	number of offenses	0	1	1	0
		rate per 100,000	0	25.7	25.7	0
Cedar Hill ISD PD	0	number of offenses	0	0	1	3
		rate per 100,000	0	0	0	0

Source: Texas Department of Public Safety. Crime in Texas Report. Retrieved June 6, 2008 from <http://www.txdps.state.tx.us/crimereports/06/cit06ch9.pdf>

The data in this section comes from the National Youth Risk Behavior Survey (YRBS). The national YRBS monitors priority health risk behaviors that contribute to the leading causes of death, disability, and social problems among youth and adults in the United States. The national YRBS is conducted every two years during the spring semester and provides data representative of 9th through 12th grade students in public and private schools throughout Dallas County.

Reported School Violence by Dallas County Students, 1997-2005

Survey Item	1997	1999	2001	2003	2005
Percentage of students who carried a weapon such as a gun, knife, or club on school property on one or more of the past 30 days	8.1%	7.6%	5.7%	6.3%	6.2%
Percentage of students who did not go to school because they felt unsafe at school or on their way to or from school on one or more of the past 30 days	7.2%	7.9%	8.5%	10.0%	8.4%
Percentage of students who had been threatened or injured with a weapon such as a gun, knife, or club on school property one or more times during the past 12 months	8.9%	9.2%	9.2%	9.3%	8.9%
Percentage of students who were in a physical fight on school property one or more times during the past 12 months	18.3%	16.7%	15.1%	16.5%	17.3%

Reported Violence by Dallas County Students, 1997-2005

Survey Item	1997	1999	2001	2003	2005
Percentage of students who were hit, slapped, or physically hurt on purpose by their boyfriend or girlfriend during the past 12 months	NA	9.9%	10.4%	13.3%	12.4%
Percentage of students who have ever been physically forced to have sexual intercourse when they did not want to	NA	NA	10.5%	9.2%	8.0%
Percentage of students who carried a weapon such as a gun, knife, or club on one or more of the past 30 days	21.1%	15.8%	15.9%	18.2%	19.2%
Percentage of students who carried a gun on one or more of the past 30 days	9.6%	5.8%	6.7%	7.1%	7.0%
Percentage of students who were in a physical fight one or more times during the past 12 months	40.0%	38.3%	41.0%	43.0%	42.9%
Percentage of students who were injured in a physical fight and had to be treated by a doctor or nurse one or more times during the past 12 months	5.0%	4.4%	3.9%	3.6%	5.4%

Note: Data is also available on the YRBS website by grade and ethnicity.

Source: Youth Risk Behavior Survey (YRBS). Retrieved June 6, 2008 from <http://apps.nccd.cdc.gov/yrbss/SelHealthTopic.asp?loc=DA>

Family Violence

The data in this section comes from the Texas Department of Public Safety. The Department of Public Safety compiles data submitted to the Uniform Crime Reporting Section by 1,020 Texas Sheriffs and Chiefs of Police. These agencies report the number of known index crime offenses from their records of complaints from victims, reports from witnesses, and from crimes discovered by the agency during its operation. Duplicate and false reports are later removed. The number of offenses is reported without regard to whether arrests are made, stolen property recovered, or prosecution took place.

Family Violence by Police Jurisdiction in Dallas County, 1996-2006

Family Violence by Jurisdiction	1996	1997	1998	1999	2000	2001	2002	2003	2004	2005	2006
Dallas CO SO	NA	NA	NA	66	51	82	82	60	52	55	53
Dallas PD	21,666	19,626	19,878	19,476	19,381	19,375	17,665	15,416	14,371	14,445	13,096
Addison PD	98	97	102	94	128	150	149	157	140	179	161
Balch Springs PD	346	203	215	144	134	173	183	225	194	203	213
Carrollton PD	474	482	434	373	351	365	377	427	470	459	472
Cedar Hill PD	96	118	105	235	220	290	270	270	276	290	273
Cockrell Hill PD	58	43	12	11	17	11	12	3	8	34	28
Coppell PD	95	84	88	85	42	37	58	69	85	91	88
Desoto PD	259	277	280	302	450	422	416	425	404	411	340
Duncanville PD	273	279	241	255	241	226	214	318	255	268	216
Farmers Branch PD	238	230	162	169	129	143	117	125	134	155	140
Garland PD	2,418	2,227	2,207	1,986	1,090	1,752	1,850	1,991	1,859	2,106	2,020
Grand Prairie PD	1,499	1,473	1,322	1,145	1,311	1,327	1,530	1,466	1,393	1,480	1,094
Highland Park PD	14	25	18	11	22	30	20	16	16	5	7
Hutchins PD	25	23	17	19	16	19	22	38	24	27	18
Irving PD	2,166	1,951	1,991	1,892	1,808	1,920	1,979	2,074	2,042	1,841	1,715
Lancaster PD	244	312	256	306	218	326	385	292	388	458	457
Mesquite PD	1,202	1,048	1,011	947	1,157	1,170	1,014	1,140	1,094	1,030	949
Richardson PD	1,347	706	417	395	378	342	427	443	394	377	371
Sachse PD	34	26	32	41	33	32	55	57	70	41	66
Seagoville PD	77	84	96	106	101	86	78	103	93	126	119
University Park PD	16	17	11	15	10	14	27	13	19	13	17
Wilmer PD	44	37	35	36	62	28	51	28	37	32	30
UT Med School - Dallas PD	NA	NA	NA	1	1	2	1	2	0	3	1
UT Dallas PD	NA	NA	NA	4	1	3	5	5	6	4	3
Rowlett PD	264	265	299	300	372	342	394	433	443	380	410
North Lake College PD	NA	NA	NA	0	0	1	0	0	0	0	0
Richland College PD	NA	NA	NA	0	0	0	0	0	4	1	0
Mountain View College PD	NA	NA	NA	0	0	0	0	0	0	3	0
Glenn Heights PD	77	95	93	139	85	76	93	87	104	125	110

Family Violence by Jurisdiction	1996	1997	1998	1999	2000	2001	2002	2003	2004	2005	2006
Dallas Co Hosp Dist PD	NA	NA	NA	19	83	73	0	0	1	0	4
Baylor Hlth Care Sys PD	NA	NA	NA	5	3	6	5	2	6	4	1
Southern Methodist Univ PD	NA	NA	NA	1	0	1	0	0	1	9	4
Ovilla PD	NA	NA	5	1	6	15	4	13	4	14	11
Cedar Hill ISD PD	NA	NA	NA	0	0	0	0	0	0	0	1
Other	96	120	102	NA	NA	NA	NA	NA	NA	NA	NA
DALLAS COUNTY	33,126	29,848	29,429	28,579	27,901	28,839	27,483	25,698	24,387	24,669	22,488

Note: 1996 to 1998 compiled sheriff's office, university police, and hospital police data. 1999 to 2006 does not do so.

Source: Texas Department of Public Safety. Crime in Texas Report. Retrieved June 6, 2008 from

http://www.txdps.state.tx.us/administration/crime_records/pages/crimestatistics.htm

The data in this section comes from the Texas Department of Family and Protective Services. The data presented below primarily describes the services provided by the department. When comparing data from year-to-year, the department asks readers to keep in mind that the department has undergone major changes over time. They warn that this can cause year-to-year comparisons to be misleading.

Dallas County Child Abuse and Neglect Data, 1997-2007

Year	1997	1998	1999	2000	2001	2002	2003	2004	2005	2006	2007
Child Population	582,747	591,261	597,558	605,201	627,628	637,529	646,941	659,361	659,361	647,458	651,831
Confirmed Victims of Child Abuse/Neglect	3,969	4,709	4,611	4,802	4,337	5,138	5,292	5,116	5,116	5,532	5,443
Confirmed Victims of Child Abuse/Neglect per 1,000 Children	6.81	8	7.7	7.9	6.9	8.1	8.2	7.8	7.8	8.5	8.4
Total CPS Completed Investigations	8,240	10,581	10,699	10,426	9,862	11,907	11,969	12,304	12,304	12,894	12,466
Confirmed CPS Investigations Percent	2,743	3,252	3,157	3,216	2,891	3,391	3,540	3,329	3,329	3,440	3,309
Investigations Confirmed	33.30%	30.70%	29.50%	30.80%	29.30%	28.50%	29.60%	27.10%	27.10%	26.70%	26.50%

Source: Texas Department of Family and Protective Services. Data Books. Retrieved June 6, 2008 from

http://www.dfps.state.tx.us/About/Data_Books_and_Annual_Reports/default.asp

Teen Pregnancy

The data in this section comes from the Texas Department of State Health Services, Vital Statistics Unit. The department uses four large ethnicity categories: non-Hispanic white, Hispanic, and other. They convert the various self-reported ethnicities into these four categories. For more information, visit http://www.dshs.state.tx.us/chs/chs_faqs.shtm.

Births to Mothers 17 Years of Age and Younger, 2001-2004

Year	Region	TOTAL	%	WHITE**	%	BLACK	%	HISPANIC	%
2001	Dallas County	2,280	5.3	275	2	700	8.6	1,305	6.2
	Texas	19,754	5.4	4,291	2.8	3,104	7.6	12,359	7.2
	Region 3	4,525	4.5	1,164	2.3	1,087	8	2,274	6.4
2002	Dallas County	2,221	5.2	270	2	657	7.8	1,294	6.1
	Texas	19,730	5.3	4,034	2.6	3,003	7.2	12,693	7.1
	Region 3	4,467	4.4	1,146	2.3	1,054	7.5	2,267	6.1
2003	Dallas County	2,249	5.3	267	2.1	606	7.3	1,376	6.5
	Texas	19,237	5.1	3,807	2.5	2,862	6.9	12,568	6.9
	Region 3	4,462	4.4	1,102	2.2	994	7.1	2,366	6.3
2004	Dallas County	2,296	5.4	260	2.1	652	7.7	1,384	6.3
	Texas	19,247	5	3,757	2.5	2,805	6.7	12,685	6.8
	Region 3	4,572	4.4	1,098	2.2	1,020	7.1	2,454	6.3

Note: Denominator for percent is all births for which mother's age was reported for race/ethnic group and geographic area.

** Includes Other and Unknown Race/Ethnicity.

Reported Pregnancies, Births, Fetal Deaths, and Abortions By County Of Residence for Women Age 13-17, 2001-2004

	COUNTY	PREGNANCY RATE**	TOTAL PREGNANCIES**	LIVE BIRTHS	FETAL DEATHS	ABORTIONS	FEMALE POP AGE 13-17+
2001	DALLAS	35.1	2,758	2,276	18	464	78,497
	TEXAS	29.5	23,416 ++	19,721	140	3,555 ++	794,406
	REGION 3	27.2	5,450	4,517	36	897	200,690
2002	DALLAS	34.2	2,741	2,218	10	513	80,140
	TEXAS	28.5	23,311	19,704	122	3,485++	818,118
	REGION 3	26	5,496	4,461	28	1,007	210,999
2003	DALLAS	34	2,760	2,244	11	505	81,059
	TEXAS	27.6	22,911	19,215	136	3,560++	830,844
	REGION 3	25.3	5,492	4,456	31	1,005	217,167
2004	DALLAS	33.4	2,732	2,293	15	424	81,899
	TEXAS	26.6	22,480	19,226	113	3,141 ++	846,240
	REGION 3	24.6	5,485	4,566	31	888	222,891

** Pregnancy rates per 1,000 women in the specified age group.

+ Population estimates for July 1, 2004 produced by the Texas State Data Center, December 2005.

++ Includes abortions among Texas residents whose county of residence was unknown.

Source Texas Department of State Health Services. Texas Vital Statistics. Retrieved June 6, 2008 from <http://www.dshs.state.tx.us/chs/vstat/annrpts.shtm>

The data in this section comes from the National Youth Risk Behavior Survey (YRBS). The national YRBS monitors priority health risk behaviors that contribute to the leading causes of death, disability, and social problems among youth and adults in the United States. The national YRBS is conducted every two years during the spring semester and provides data representative of 9th through 12th grade students in public and private schools throughout Dallas County.

Dallas County Students Reported Sexual Behavior, 1991-2005

Survey Item	1991	1993	1995	1997	1999	2001	2003	2005
Percentage of students who ever had sexual intercourse	66.6%	65.0%	64.8%	62.1%	58.9%	56.8%	58.9%	60.2%
Percentage of Students who had sexual intercourse for the first time before age 13	21.1%	19.9%	18.0%	16.1%	13.6%	12.2%	10.4%	11.8%
Percentage of students who had sexual intercourse with four or more people during their life	32.1%	29.3%	28.4%	25.8%	21.6%	20.6%	20.2%	19.1%
Percentage of students who had sexual intercourse with one or more people during the past three months	47.5%	45.2%	45.5%	43.7%	40.7%	38.8%	41.8%	40.6%
Among students who had sexual intercourse during the past three months, the percentage who drank alcohol or used drugs before last sexual intercourse	18.0%	16.4%	20.3%	15.5%	16.5%	20.9%	18.4%	20.7%

Note: Data is also available on the YRBS website by grade and ethnicity.

Source: Youth Risk Behavior Survey (YRBS). Retrieved June 6, 2008 from <http://apps.nccd.cdc.gov/yrbss/SelHealthTopic.asp?loc=DA>

Sexually Transmitted Diseases

The data in this section comes from the Dallas County Health and Human Services Department.

Reported Rates of Chlamydia, Gonorrhea, and Syphilis in Dallas County, 1999-2007

STD	1999	2000	2001	2002	2003	2004	2005	2006	2007
Chlamydia	9,365	9,905	10,137	9,416	9,403	NA	NA	8,419	12,456
Gonorrhea	7,545	7,266	6,120	5,199	4,603	NA	NA	4,614	6,004
Syphilis	684	579	691	983	978	NA	NA	1,140	NA

Source: Dallas County Health and Human Services. STD/HIV Statistics and Morbidity Data. Retrieved June 6, 2008 from http://www.dallascounty.org/departments/hhservices/services/stdhiv/STD_statistics.htm

HIV/AIDS

The data in this section comes from the Dallas County Health and Human Services Department.

Rates of HIV in Dallas County by Ethnicity, 1999-2007

Ethnicity	1999	2000	2001	2002	2003	2004	2005	2006	2007
White, Not Hispanic	214	359	396	597	340	338	411	NA	333
Black, Not Hispanic	246	321	431	459	357	319	367	NA	407
Hispanic	62	105	183	185	142	117	127	NA	149
Asian/Pacific Islander	2	5	10	10	14	8	6	NA	9
Am. Indian/Alaska Native	1	4	2	3	3	0	1	NA	0
Multi race	-	-	-	-	1	NA	1	NA	6
Unknown	0	4	3	1	4	0	2	NA	7
Total	525	798	1,025	1,255	861	782	915	NA	911

Rates of HIV in Dallas County by Exposure Category, 1999-2007

Exposure Category	1999	2000	2001	2002	2003	2004	2005	2006	2007
Men who have sex with men	295	472	519	706	408	473	624	NA	582
Injecting drug use	33	39	95	71	39	17	26	NA	10
Men who have sex with men and inject drugs	40	53	40	32	10	14	10	NA	13
Hemophilia/coagulation disorder	0	0	1	1	0	0	0	NA	1
Heterosexual contact	104	30	50	160	38	66	147	NA	160
Receipt of blood, components, or tissue	2	3	0	4	3	0	0	NA	1
Risk not reported/Other	51	201	320	281	363	213	108	NA	144
Total	525	798	1,025	1,255	861	783	915	NA	911

Rates of HIV in Dallas County by Age, 1999-2007

Age	1999	2000	2001	2002	2003	2004	2005	2006	2007
Under 5	0	0	0	0	0	0	0	NA	0
5-12	0	0	0	1	0	0	0	NA	0
13-19	18	29	23	33	22	20	35	NA	42
20-29	157	230	262	253	225	208	193	NA	289
30-39	237	323	425	502	321	294	310	NA	268
40-49	88	158	234	351	221	191	278	NA	202
Over 49	25	58	81	115	71	70	99	NA	110
Unknown	0	0	0	0	1	0	0	NA	0
Total	525	798	1,025	1,255	861	783	915	NA	911

Source: Dallas County Health and Human Services. Retrieved June 6, 2008 from http://www.dallascounty.org/department/hhservices/services/stdhiv/STD_statistics.htm

Rates of AIDS in Dallas County by Ethnicity, 1999-2007

Ethnicity	1999	2000	2001	2002	2003	2004	2005	2006	2007
White, Not Hispanic	249	253	254	214	171	140	153	NA	141
Black, Not Hispanic	208	271	267	232	231	175	163	NA	154
Hispanic	84	93	124	109	99	69	95	NA	97
Asian/Pacific Islander	2	4	7	4	5	6	6	NA	6
Am. Indian/Alaska Native	2	5	2	2	0	1	0	NA	1
Multi race				0	1	0	1	NA	2
Unknown	0	0	3	0	0	0	0	NA	1
Total	545	626	657	561	507	391	418	NA	402

Rates of AIDS in Dallas County by Exposure Category, 1999-2007

Exposure Category	1999	2000	2001	2002	2003	2004	2005	2006	2007
Men who have sex with men	344	352	345	283	258	212	273	NA	237
Injecting drug use	33	43	42	39	21	19	13	NA	21
Men who have sex with men and inject drugs	33	35	39	20	14	7	5	NA	8
Hemophilia/coagulation disorder	0	1	0	1	0	0	0	NA	0
Heterosexual contact	88	26	32	65	14	27	61	NA	75
Receipt of blood, components, or tissue	1	6	3	2	1	1	0	NA	0
Risk not reported/Other	46	163	196	151	199	125	66	NA	61
Total	545	626	657	561	507	391	418	NA	402

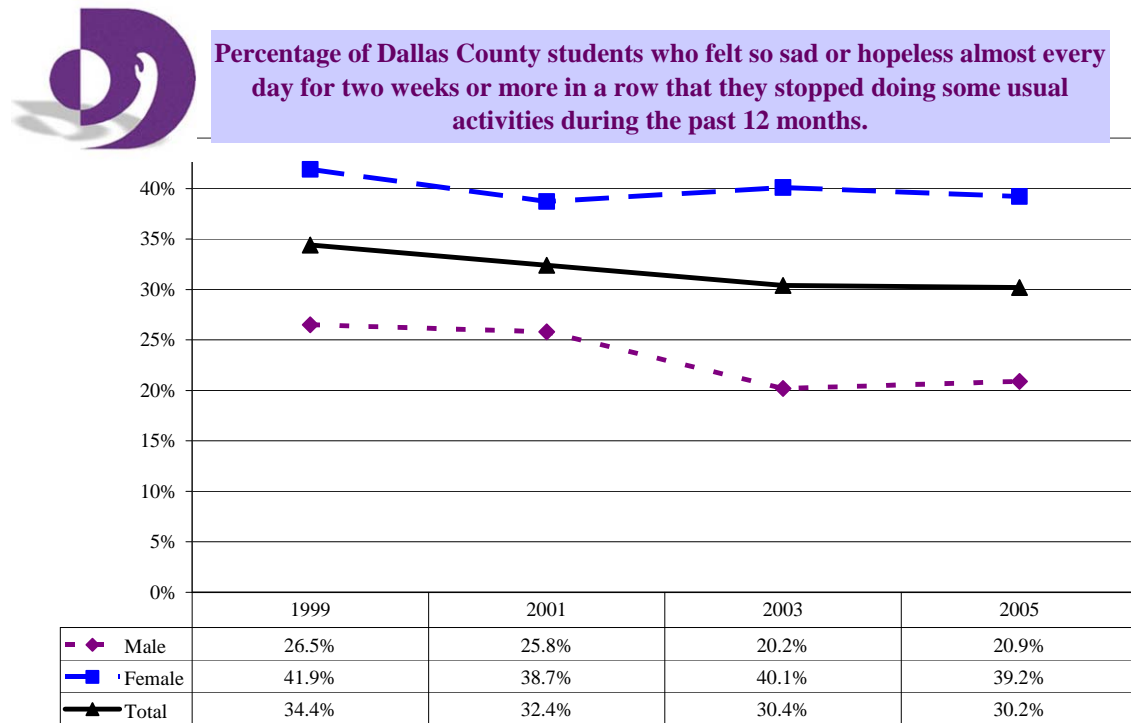
Rates of AIDS in Dallas County by Age, 1999-2007

Age	1999	2000	2001	2002	2003	2004	2005	2006	2007
Under 5	0	0	0	0	0	0	0	NA	0
5-12	0	0	0	0	0	0	0	NA	0
13-19	1	6	3	3	1	4	3	NA	8
20-29	93	101	98	79	65	69	68	NA	80
30-39	258	291	302	275	211	150	158	NA	133
40-49	138	159	191	141	163	116	144	NA	119
Over 49	55	69	63	63	67	52	45	NA	62
Unknown	0	0	0	0	0	0	0	NA	0
Total	545	626	657	561	507	391	418	NA	402

Source: Dallas County Health and Human Services. Retrieved June 6, 2008 from http://www.dallascounty.org/department/hhservices/services/stdhiv/STD_statistics.htm

Mental Health

The data in this section comes from the National Youth Risk Behavior Survey (YRBS). The national YRBS monitors priority health risk behaviors that contribute to the leading causes of death, disability, and social problems among youth and adults in the United States. The national YRBS is conducted every two years during the spring semester and provides data representative of 9th through 12th grade students in public and private schools throughout Dallas County.

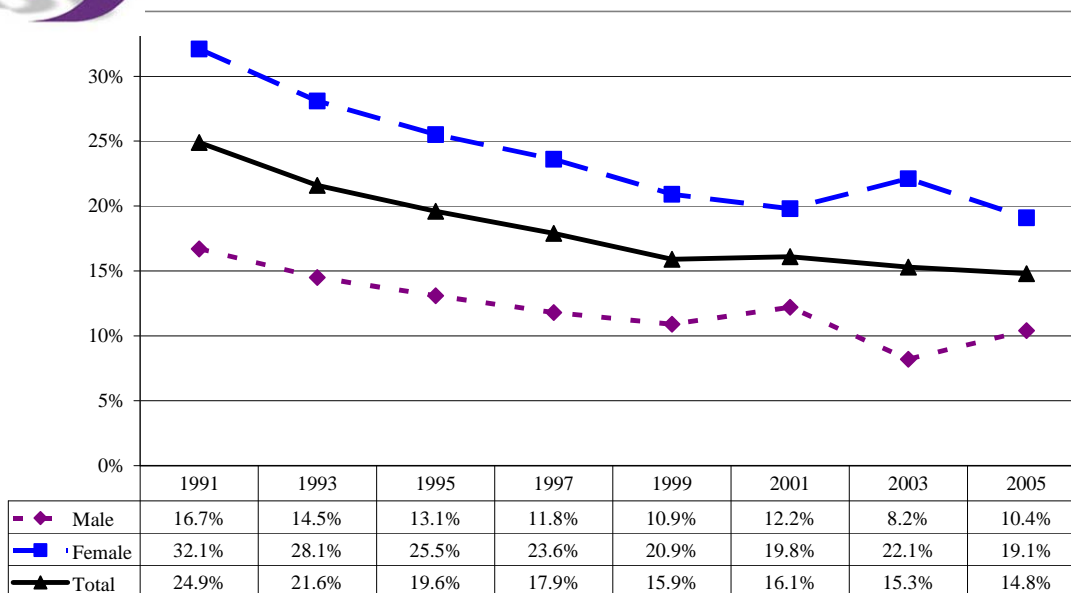


Note: Data is also available on the YRBS website by grade and ethnicity.

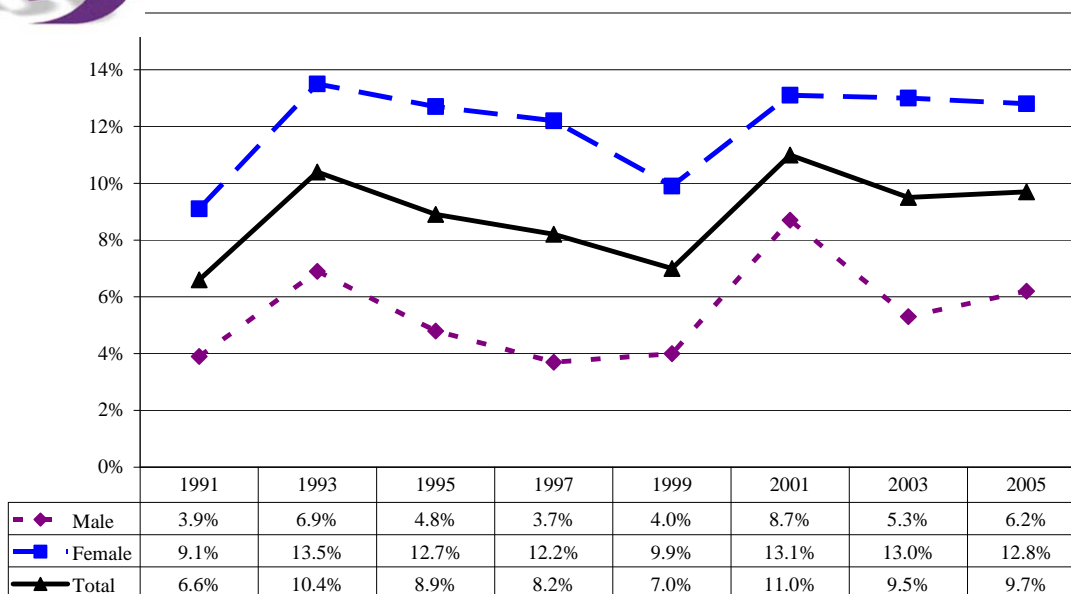
Source: Youth Risk Behavior Survey (YRBS). Retrieved June 6, 2008 from <http://apps.nccd.cdc.gov/yrbss/SelHealthTopic.asp?loc=DA>



Percentage of Dallas County students who seriously considered attempting suicide during the past 12 months.



Percentage of Dallas County students who actually attempted suicide one or more times during the past 12 months.

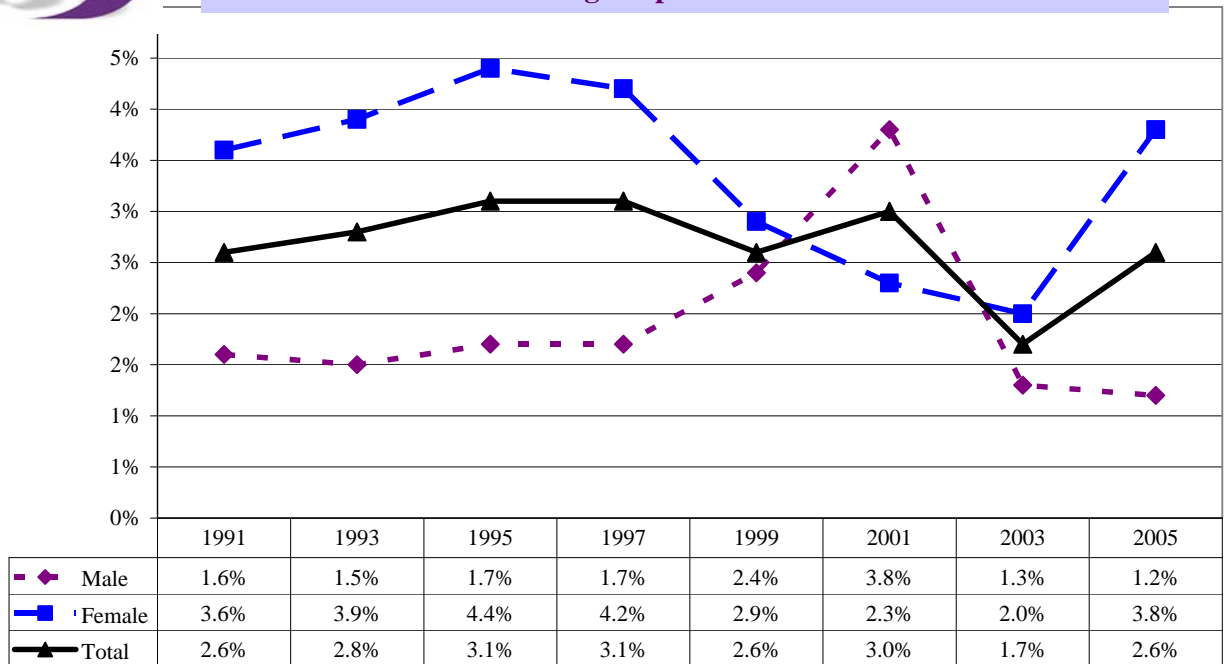


Note: Data is also available on the YRBS website by grade and ethnicity.

Source: Youth Risk Behavior Survey (YRBS). Retrieved June 6, 2008 from <http://apps.nccd.cdc.gov/yrbss/SelHealthTopic.asp?loc=DA>



Percentage of Dallas County students whose suicide attempt resulted in an injury, poisoning, or overdose that had to be treated by a doctor or nurse during the past 12 months.



Note: Data is also available on the YRBS website by grade and ethnicity.

Source: Youth Risk Behavior Survey (YRBS). Retrieved June 6, 2008 from <http://apps.nccd.cdc.gov/yrbss/SelHealthTopic.asp?loc=DA>

High School Drop Out Rates

The data in this section comes from the Texas Education Agency. They keep statistics regarding high school completion, graduation, and dropout rates by county, district, campus, and county.

Dallas County Public School Drop Out Rates, 1999-2006

	School Year						
	1999- 2000	2000- 2001	2001- 2002	2002- 2003	2003- 2004	2004- 2005	2005- 2006
African American	1.3%	1.2%	1.1%	1.3%	1.0%	1.0%	4.7%
Hispanic	1.3%	1.2%	1.2%	1.4%	1.4%	1.3%	4.6%
White	0.5%	0.4%	0.5%	0.6%	0.7%	0.6%	2.4%
Economically Disadvantaged	1.0%	0.8%	0.9%	1.0%	0.8%	0.9%	3.4%
At-Risk	NA	NA	NA	NA	1.2%	1.3%	4.6%
Total	1.0%	0.9%	0.9%	1.1%	1.0%	1.0%	3.9%

Note: In 2003, the 78th Texas Legislature passed legislation affecting how the dropout rate is calculated by the Texas Education Agency. It is now required for dropout rates to be computed according to the National Center for Education Statistics (NCES) dropout definition beginning with the 2005-06 school year. Under the NCES definition, a dropout is a student who is enrolled in public school in Grades 7-12, does not return to public school the following fall, is not expelled, and does not graduate, receive a GED, continue school outside the public school system, begin college, or die.

Source: Texas Education Agency (TEA). Secondary School Completion and Dropouts in Texas Public Schools. Retrieved June 6, 2008 from <http://www.tea.state.tx.us/research/abs2.htm#Dropout>